



# MacBook Air (M2, 2022)

## Apple Recycler Guide

July 2023

# Contents

|    |   |
|----|---|
| 3  | <a href="#">About This Guide</a>                            |
| 4  | <a href="#">Identification</a>                              |
| 5  | <a href="#">Directive 2021/19/EU Annex VII Components</a>   |
| 6  | <a href="#">Safety Considerations</a>                       |
| 9  | <a href="#">Recommended Tools</a>                           |
| 10 | <a href="#">Disassembly Instructions</a>                    |
| 24 | <a href="#">Material Categorization of Output Fractions</a> |

# About This Guide

Apple Recycler Guides provide guidance for electronics recyclers on how to disassemble products to maximize recovery of resources. The guides provide step-by-step disassembly instructions and information on the material composition to help recyclers direct fractions to the appropriate material recycler.

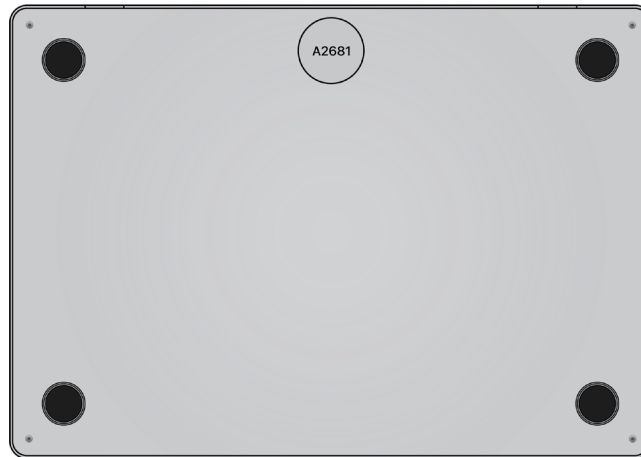
To conserve important resources, we work to reduce the materials we use and aim to one day source only recycled or renewable materials in our products. A key path to reaching that goal is resource recovery from end-of-life electronics.

Disassembly procedures are intended to be performed only by trained electronics recycling professionals. The recycler is responsible for independently evaluating and ensuring compliance with all applicable environmental, health, and safety laws related to the work. These include but are not limited to laws relating to the management, handling, shipping, and disposal of the outputs of this work as waste and laws in place to ensure the health and safety of all employees who support this work.

For questions or feedback about this guide, email [contactesci@apple.com](mailto:contactesci@apple.com).

# Identification

You can find the model number on the underside of the MacBook Air.



*Model number:*  
A2681

# Directive 2012/19/EU Annex VII Components

Directive 2012/19/EU Annex VII requirements apply to the following substances and components.

| <b>Substance/Component</b>  | <b>Apple Part Name</b>   | <b>Removal Instructions</b> |
|---|--|-----------------------------|
| Printed circuit board if the surface is greater than 10 square centimeters                              | Trackpad, main logic board, audio board, data board assembly, light-emitting diode (LED) logic board | Follow steps 1–18           |
| External electric cables  | Charge cable   | Follow step 1               |
| Battery   | Lithium-ion polymer batteries  | Follow steps 1–3            |
| Cover glass and liquid crystal display (LCD) cell if the surface is greater than 100 square centimeters | LCD cell   | Follow steps 1–15           |
| No further substances or components as listed in Annex VII  |  |                             |

# Safety Considerations

The recycler is responsible for independently evaluating all activities undertaken by its employees to perform or support the work and ensuring compliance with all applicable health and safety laws related to the work. These include but are not limited to laws relating to the health and safety of all employees who perform or support this work. The recycler is also responsible for evaluating the workspace and ensuring that the area in which the work is to be undertaken is designed using ergonomic best practices and meets all ergonomic requirements to ensure the protection of its employees.

## Personal Protective Equipment

Personal protective equipment should be worn during the entire recycling process.



Wear hand protection



Wear foot protection



Wear eye protection



Wear a mask



Wear protective clothing

## LED Safety

Broken light-emitting diodes (LEDs) must be handled properly to ensure the safety of your employees and mitigate any hazards. Package broken LEDs in an appropriate container to properly manage the hazards associated with the materials and store only with compatible materials. All waste must be properly classified, packaged, and labeled in accordance with all relevant laws and regulations.

## Battery Safety

This product uses a lithium-ion polymer battery. Before beginning any disassembly work, ensure that a safe working procedure for handling lithium-ion batteries has been established, which could include discharging the batteries so that they can be more safely managed. The following considerations may also be included:

- Remove anything from your person that could conduct energy, such as jewelry and watches, to avoid electric shock to yourself or the logic board.
- To avoid the potential for thermal runaway and the release of potentially noxious fumes, don't puncture, strike, or crush lithium-ion polymer batteries or devices powered by them.

- Don't throw, drop, or bend the battery.
- Don't expose the battery to excessive heat or sunlight.
- Don't use tools that are sharp or conduct electricity.
- Keep your workspace clear of foreign objects and sharp materials.
- Dispose of batteries according to local environmental laws and guidelines.

### Workspace safety guidelines

- Use heat-resistant gloves and safety glasses.
- Keep a sand dispenser within arm's reach (2 feet or 0.6 m) on one side of the workstation, not above the workstation. The dispenser should be a wide-mouthed, quick-pour metal container with a flip-top lid or tray that contains 8–10 cups (1.9–2.4 L) of clean, dry, untreated sand.
- Keep the battery at least 2 feet (0.6 m) from paper and other combustible materials.
- Work in an area with adequate ventilation.

### Handling a thermal runaway

If you notice any of the following signs, a thermal runaway is likely underway, and you should act immediately:

- The lithium-ion polymer battery or a device containing one begins to smoke or emit sparks or soot.
- The battery pouch suddenly and quickly puffs out.
- You hear hissing or popping sounds.

**Don't** use water or an ABC/CO<sub>2</sub> fire extinguisher on a thermal runaway battery or a device containing one. Water and ABC/CO<sub>2</sub> fire extinguishers will not stop the reaction.

**Do** smother the battery or device immediately with plenty of clean, dry sand, dumped all at once. Timing is critical; the faster you pour all the sand, the faster the thermal runaway will stop.

**Do** leave the room for 30 minutes if the thermal runaway causes any irritation.

**Do** wait 30 minutes before touching the battery. Wear heat-resistant gloves and safety glasses to remove the battery from the sand, or use a touchless thermometer to measure the battery temperature. Only touch the battery when the event has finished.

**Do** dispose of the damaged battery or device (including any debris removed from the sand) according to local environmental laws and guidelines.

## Hazard Warnings



Rechargeable battery hazard



Sharp edges—cut hazard



Chemical exposure hazard



Broken glass hazard

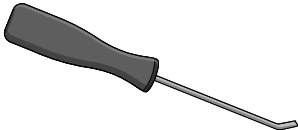


Chemical inhalation hazard

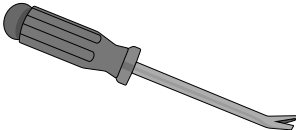


# Recommended Tools

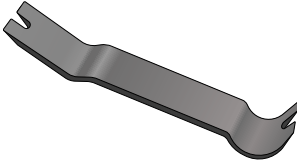
Miniature pry bar



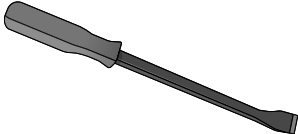
Nail-pulling screwdriver



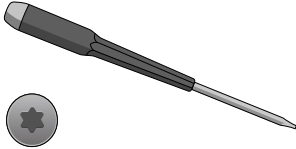
Plastic pry bar



Screwdriver-handle pry bar



Torx T5 screwdriver



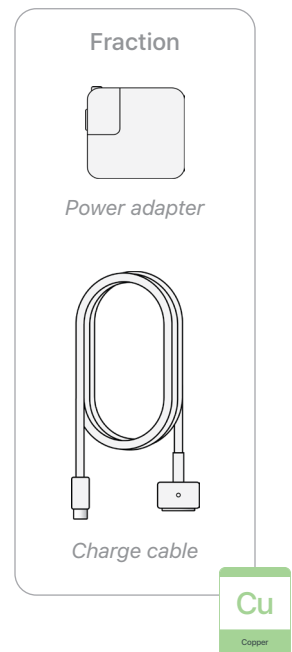
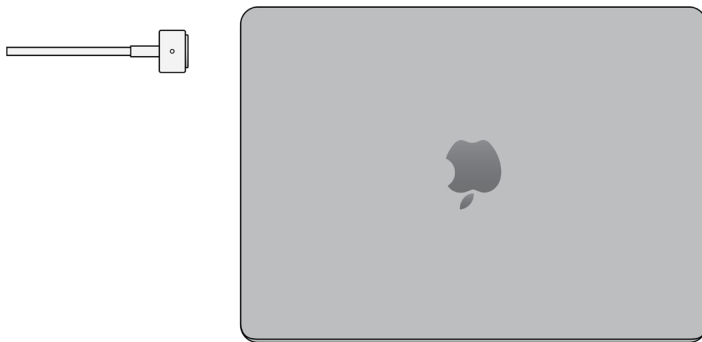
# Disassembly Instructions

## 1. Remove the power adapter and the charge cable.

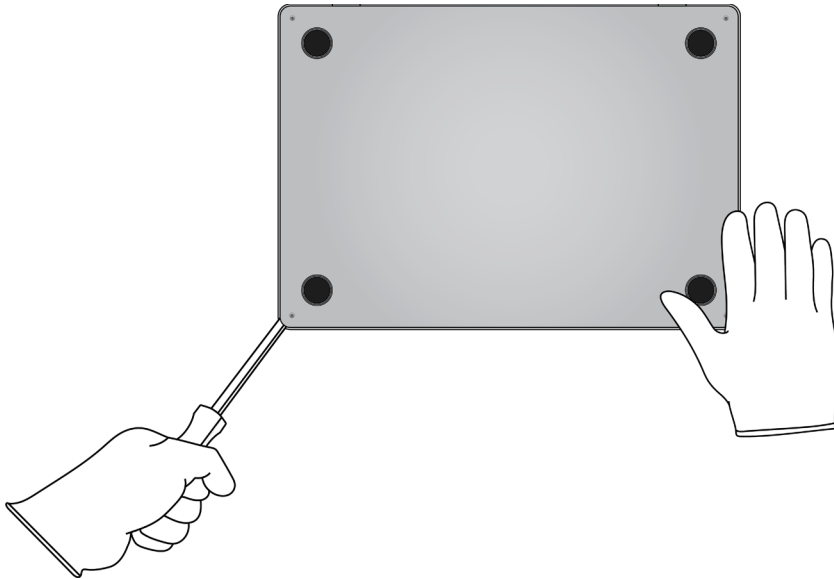
» *Ensure that the MacBook Air is turned off.*



» *Unplug the power adapter. Disconnect the charge cable.*



2. Carefully pry off the bottom case near the fasteners to avoid damaging the batteries.



Tools Used



Fraction



Bottom case

Al

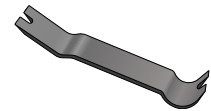
Aluminum

3. From the top case, carefully remove the four lithium-ion polymer batteries.



Rechargeable battery hazard

Tools Used



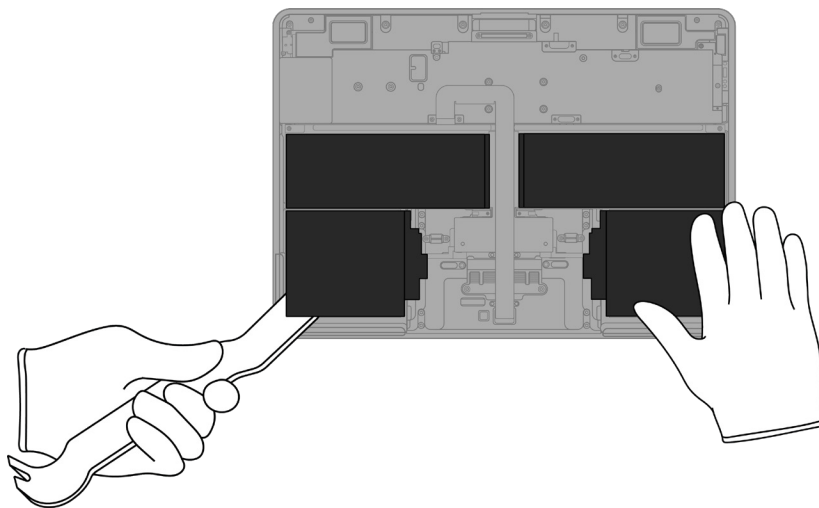
Fraction



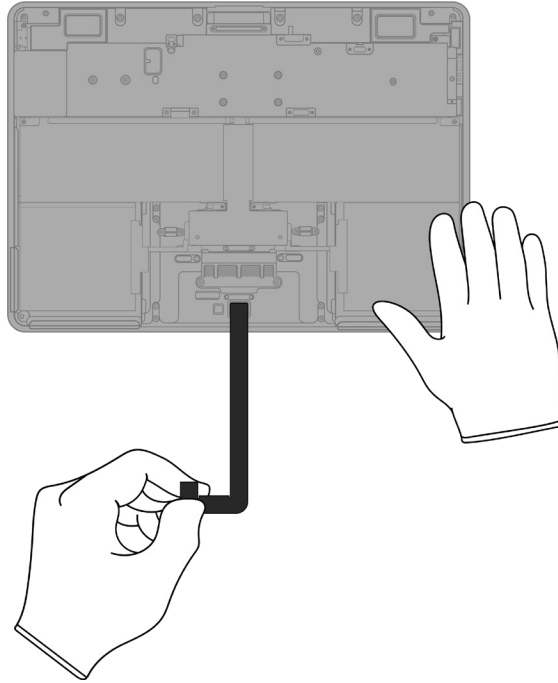
Lithium-ion polymer  
batteries (x4)

BT

Battery



**4.** Pull off the ribbon cable.



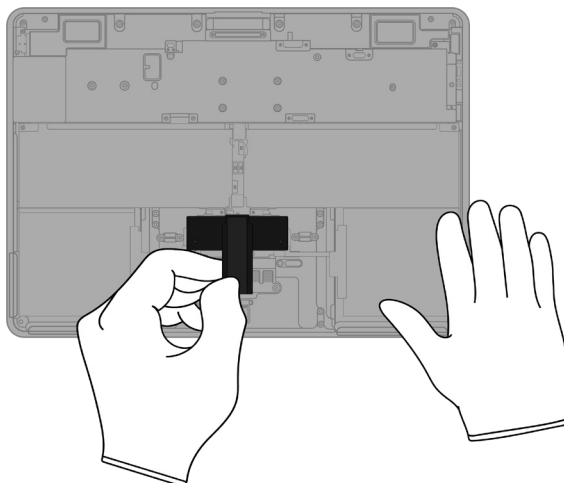
Fraction

**J**

Ribbon cable

**Cu**  
Copper

**5.** Remove the power supply cover.



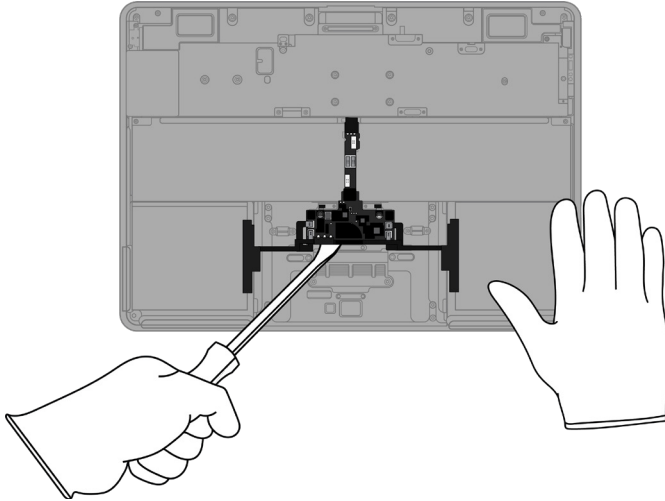
Fraction

**T**

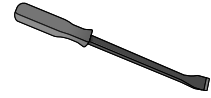
Power supply cover

**PL**  
Plastics

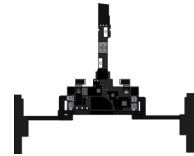
6. Pry off the power supply logic board.



Tools Used



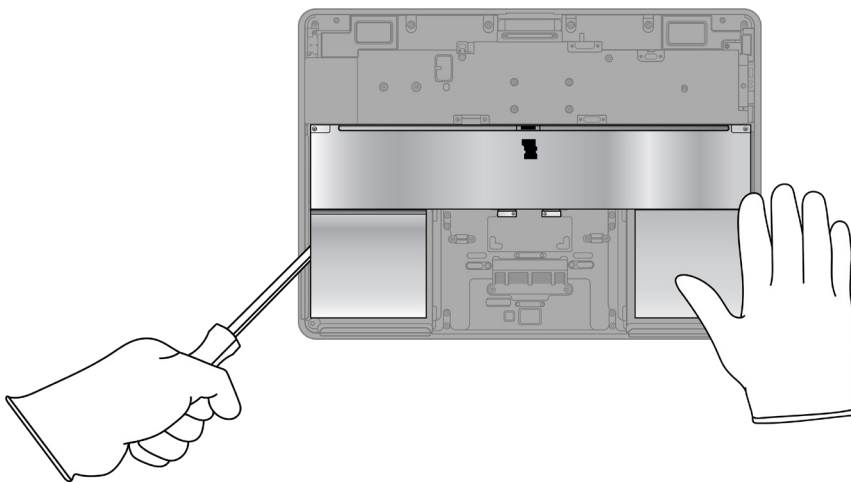
Fraction



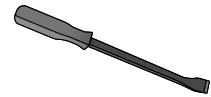
Power supply logic board

PMs  
Precious Metals

7. Pry off the battery shield.



Tools Used



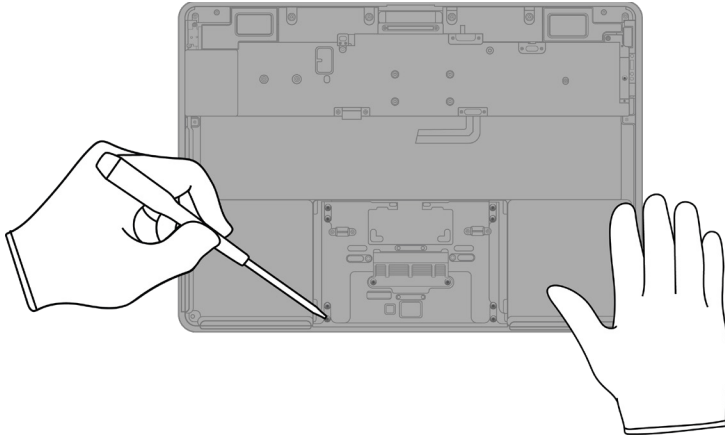
Fraction



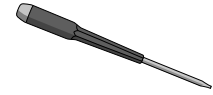
Battery shield

Fe  
Ferrous

8. Remove the trackpad by unscrewing the 10 Torx T5 fasteners.



Tools Used



Fraction



Fasteners (x10)

Fe

Ferrous

Fraction

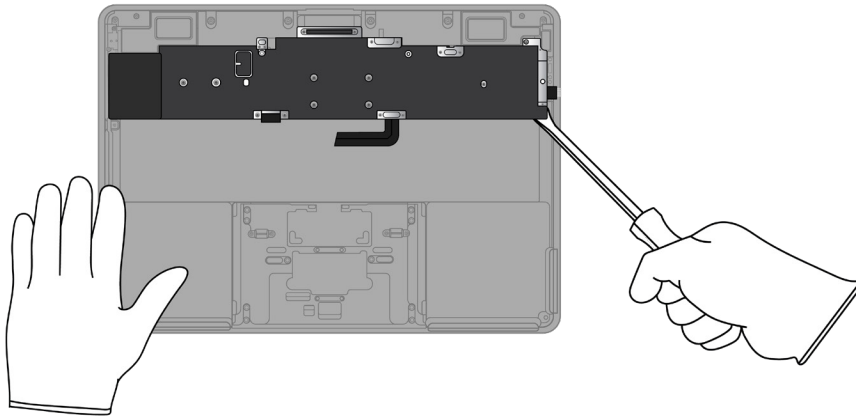


Trackpad

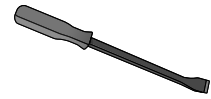
PMs

Precious Metals

**9.** Pry off the main logic board.



Tools Used



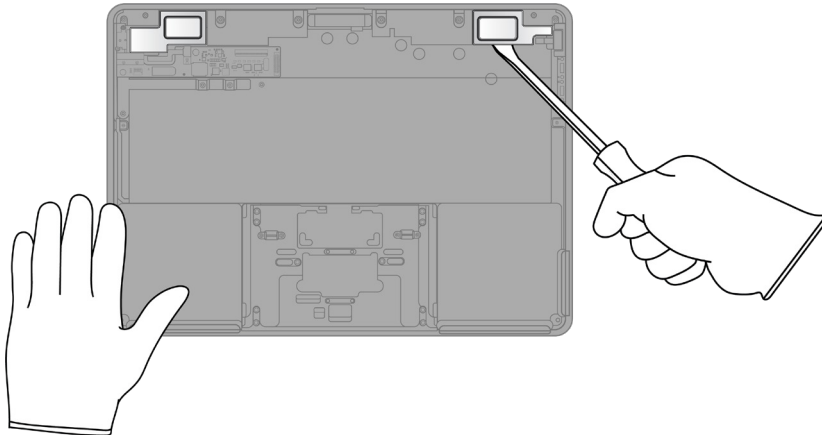
Fraction



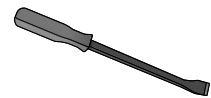
Main logic board



**10.** Pry off both speakers.



Tools Used



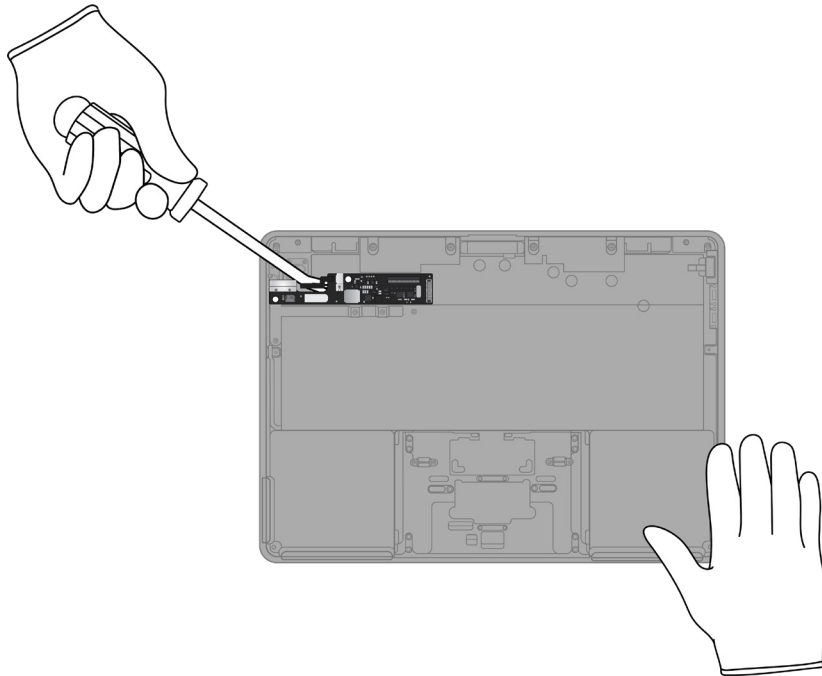
Fraction



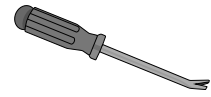
Speakers (x2)



# 11. Pry off the audio board.



## Tools Used



## Fraction



Audio board

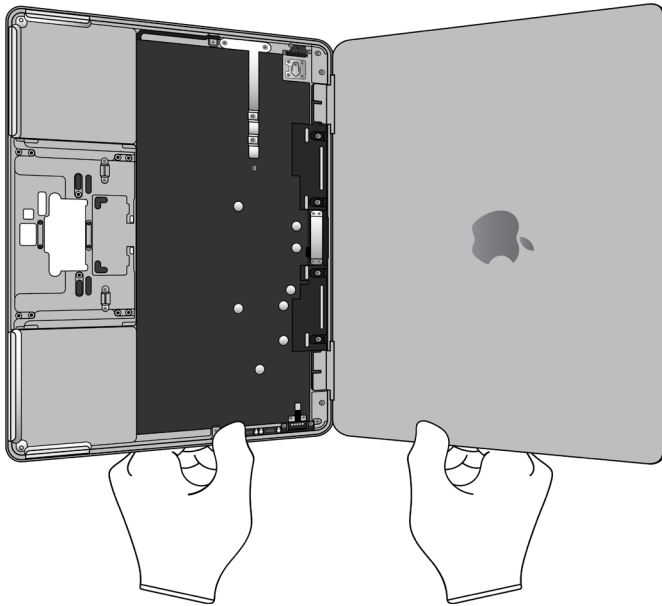




12. Separate the display and top case by bending them back and forth until the hinges break apart. Set the display aside.



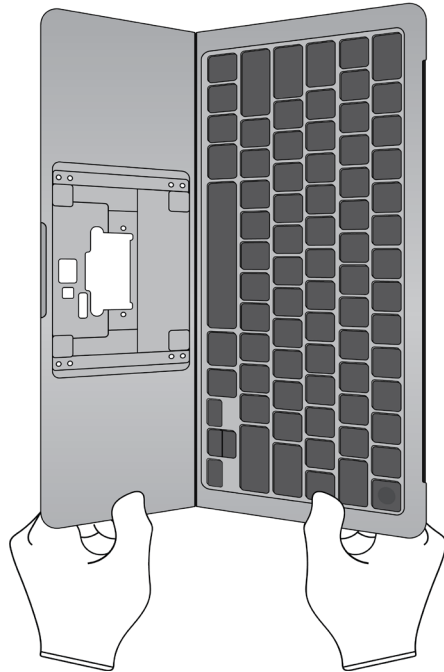
Sharp edges—cut hazard



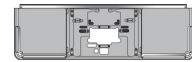
**13.** Separate the keyboard and trackpad enclosure by breaking the top case in half.



Sharp edges—cut hazard



Fraction



Trackpad enclosure

Al

Aluminum

Fraction

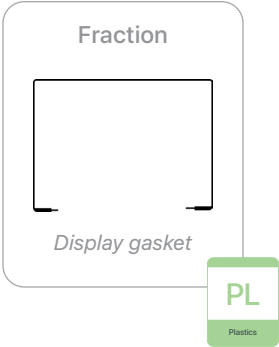
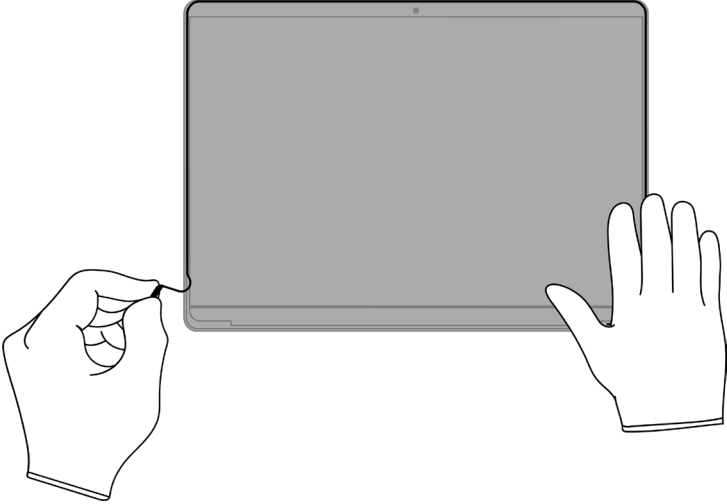


Keyboard

Cu

Copper

**14.** On the display, pull off the display gasket.



## 15. Remove the LCD cell and plastic films.

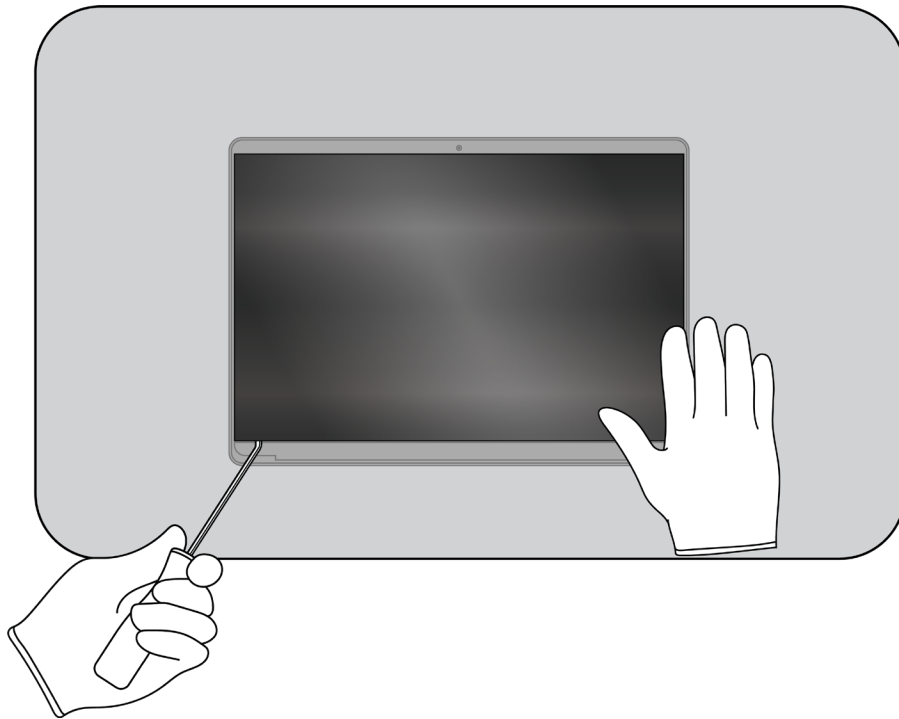
- » *Pry the LCD cell and display films away from the display housing.*
- » *Separate the LCD cell and display films by hand.*



Chemical exposure hazard



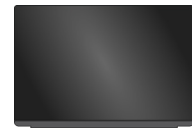
Broken glass hazard



### Tools Used



### Fraction



LCD cell

GL

Glass

### Fraction



Display films

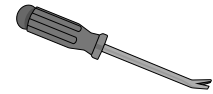
PL

Plastics

- 16.** Pry the data board assembly off the display housing.



Tools Used



- 17.** Separate the data board assembly cover from the data board assembly.



Fractions



Data board assembly cover

PL

Plastics

Fraction



Data board assembly

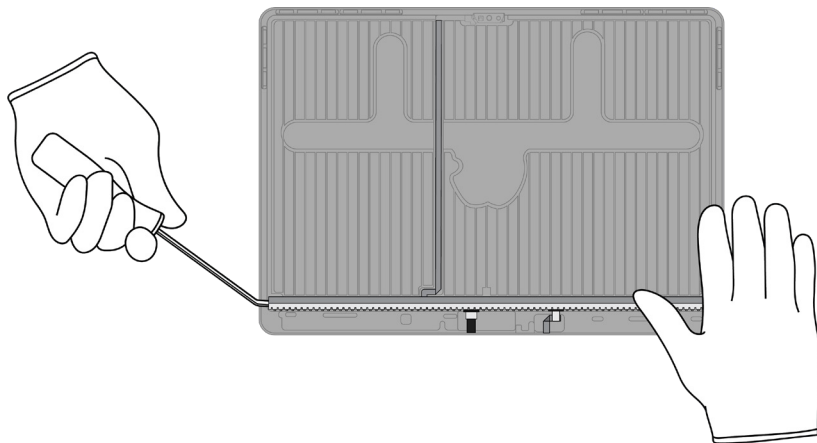
PMs

Precious Metals

## 18. Pry the LED logic board off the display housing.



Chemical inhalation hazard



### Tools Used



### Fraction

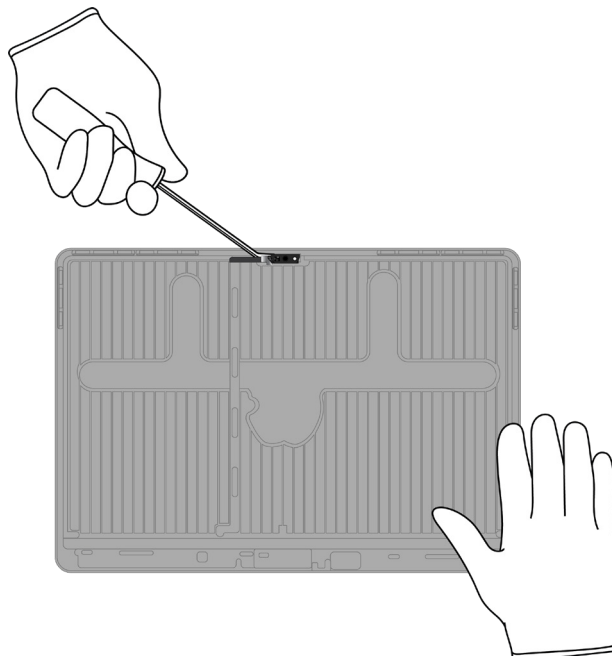


LED logic board

PMs

Precious Metals

## 19. Pry off the camera.



### Tools Used



### Fraction

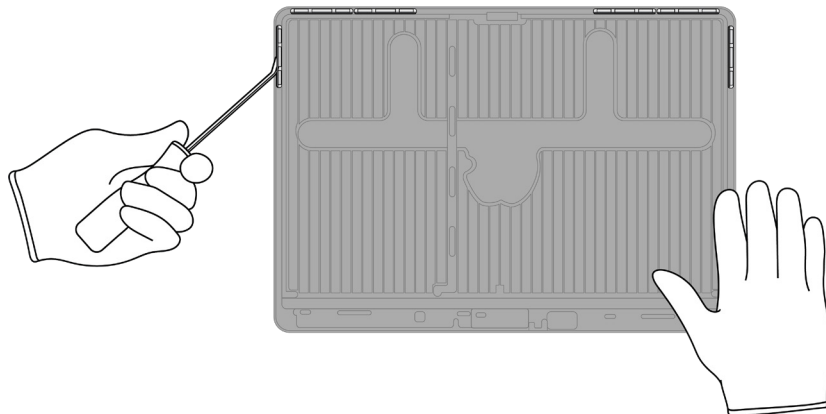
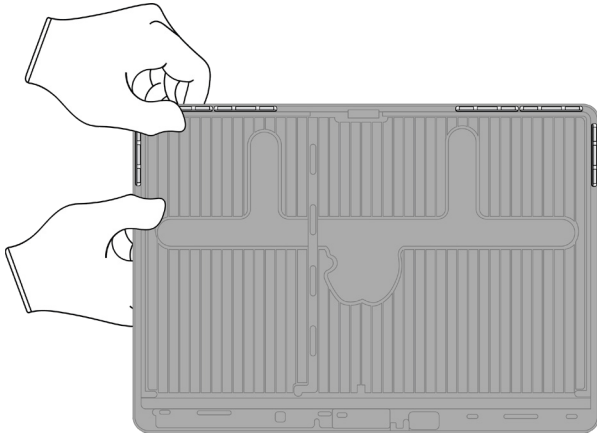


Camera

PMs

Precious Metals

**20.** Bend the display housing until the six magnets pop up. Pry off the magnets.



Tools Used



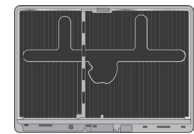
Fraction



Magnets (x6)

REE  
Rare Earth  
Elements

Fraction



Display housing

Al  
Aluminum

# Material Categorization of Output Fractions

All outputs from this process must be managed, handled, and disposed of in accordance with applicable waste laws and regulations, including but not limited to the Waste Framework Directive and its national enactments in Europe.

| Fraction | Downstream Processing |
|----------|-----------------------|
|----------|-----------------------|

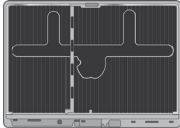
### Aluminum



Bottom case



Trackpad enclosure



Display housing

### Primary Target Material



### Potential Additional Material



### Batteries



Lithium-ion polymer batteries (x4)

### Primary Target Material

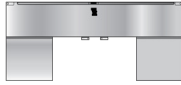




**Fraction**

**Downstream Processing**

**Ferrous**



*Battery shield*

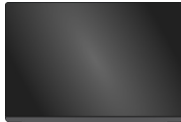


*Fasteners (x10)*

**Primary Target Material**



**Glass**



*LCD cell*

**Primary Target Material**



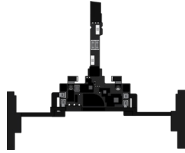
**Potential Additional Materials**



**Fraction**

**Downstream Processing**

**Logic Boards**



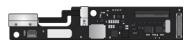
*Power supply logic board*



*Trackpad*



*Main logic board*



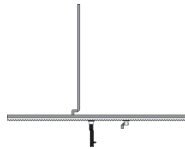
*Audio board*



*Camera*



*Data board assembly*



*LED logic board*

**Primary Target Material**



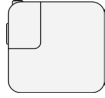
**Potential Additional Materials**



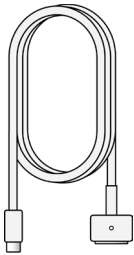
**Fraction**

**Downstream Processing**

**Mixed Electronics**



*Power adapter*



*Charge cable*



*Ribbon cable*



*Keyboard*

**Primary Target Material**



**Potential Additional Materials**



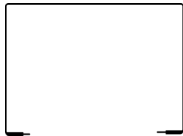
## Fraction

## Downstream Processing

### Mixed Plastics



Power supply cover



Display gasket



Display films



Data board assembly cover

### Primary Target Material



### Rare Earth Magnets



Speakers (x2)



Magnets (x6)

### Primary Target Material



### Potential Additional Materials

