



iPhone SE (1st generation)

Apple Recycler Guide

March 2022

Contents

| | |
|----|---|
| 3 | About This Guide |
| 4 | Identification |
| 5 | Directive 2012/19/EU Annex VII Components |
| 6 | Safety Considerations |
| 9 | Recommended Tools |
| 10 | Disassembly Instructions |
| 22 | Material Categorization of Output Fractions |

About This Guide

Apple Recycler Guides provide guidance for electronics recyclers on how to disassemble products to maximize recovery of resources. The guides provide step-by-step disassembly instructions and information on the material composition to help recyclers direct fractions to the appropriate material recycler.

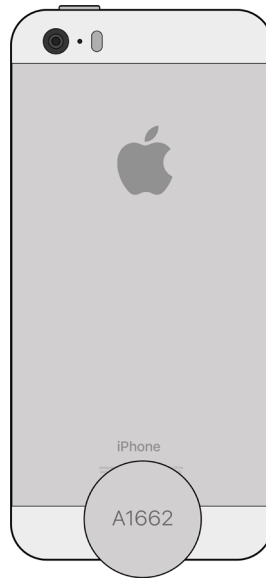
To conserve important resources, we work to reduce the materials we use and aim to one day source only recycled or renewable materials in our products. A key path to reaching that goal is resource recovery from end-of-life electronics.

Disassembly procedures are intended to be performed only by trained electronics recycling professionals. The recycler is responsible for independently evaluating and ensuring compliance with all applicable environmental, health, and safety laws related to the work. These include but are not limited to laws relating to the management, handling, shipping, and disposal of the outputs of this work as waste and laws in place to ensure the health and safety of all employees who support this work.

For questions or feedback about this guide, email contactesci@apple.com.

Identification

You can find the model number on the back of the iPhone.



Model numbers:
A1662, A1723, A1724

Directive 2012/19/EU Annex VII Components

Directive 2012/19/EU Annex VII requirements apply to the following substances and components.

| Substance/Component | Location | Removal Instructions |
|---|------------------|----------------------|
| Printed circuit board if the surface is greater than 10 square centimeters | Main logic board | Follow steps 1–11 |
| External electric cables | Power adapter | Follow step 1 |
| Battery | iPhone enclosure | Follow steps 1–7 |
| Cover glass and liquid crystal display (LCD) cell if the surface is greater than 100 square centimeters | Display | Follow steps 1–6 |
| No further substances or components as listed in Annex VII | | |

Safety Considerations

The recycler is responsible for independently evaluating all activities undertaken by its employees to perform or support the work and ensuring compliance with all applicable health and safety laws related to the work. These include but are not limited to laws relating to the health and safety of all employees who perform or support this work. The recycler is also responsible for evaluating the workspace and ensuring that the area in which the work is to be undertaken is designed using ergonomic best practices and meets all ergonomic requirements to ensure the protection of its employees.

Personal Protective Equipment

Personal protective equipment should be worn during the entire recycling process.



Wear hand protection



Wear foot protection



Wear eye protection



Wear a mask



Wear protective clothing

Battery Safety

This product uses a lithium-ion polymer battery. Follow these steps for safe removal and disposal of the battery:

- Discharge the battery to less than 25 percent before beginning any disassembly. Thermal runaway is less likely to occur in a discharged battery.
- Remove anything from your person that could conduct energy, such as jewelry and watches, to avoid electric shock to yourself or the logic board.
- To avoid the potential for thermal runaway and the release of potentially noxious fumes, don't puncture, strike, or crush lithium-ion polymer batteries or devices powered by them.
- Don't throw, drop, or bend the battery.
- Don't expose the battery to excessive heat or sunlight.
- Use only tools that are not sharp and do not conduct electricity.
- Keep your workspace clear of foreign objects and sharp materials.
- Dispose of batteries according to local environmental laws and guidelines.

Workspace safety guidelines

- Use heat-resistant gloves and safety glasses.
- Keep a sand dispenser within arm's reach (2 feet or 0.6 m) on either side of the workstation, not above the workstation. The dispenser should be a wide-mouthed, quick-pour metal container with a flip-top lid or tray that contains 8–10 cups (1.9–2.4 L) of clean, dry, untreated sand.
- Keep the battery at least 2 feet (0.6 m) from paper and other combustible materials.
- Work in an area with adequate ventilation.

Handling a thermal runaway

If you notice any of the following signs, a thermal runaway is likely underway, and you should act immediately:

- The lithium-ion polymer battery or a device containing one begins to smoke or emit sparks or soot.
- The battery pouch suddenly and quickly puffs out.
- You hear hissing or popping sounds.

Don't use water or an ABC/CO₂ fire extinguisher on a thermal runaway battery or a device containing one. Water and ABC/CO₂ fire extinguishers will not stop the reaction.

Do smother the battery or device immediately with plenty of clean, dry sand, dumped all at once. Timing is critical; the faster you pour all the sand, the faster the thermal runaway will stop.

Do leave the room for 30 minutes if the thermal runaway causes any irritation.

Do wait 30 minutes before touching the battery. Wear heat-resistant gloves and safety glasses to remove the battery from the sand, or use a touchless thermometer to measure the battery temperature. Only touch the battery when the event has finished.

Do dispose of the damaged battery or device (including any debris removed from the sand) according to local environmental laws and guidelines.

LED Safety

Broken light-emitting diodes (LEDs) must be handled properly to ensure the safety of your employees and mitigate any hazards. Package broken LEDs in an appropriate container to properly manage the hazards associated with the materials and store only with compatible materials. All waste must be properly classified, packaged, and labeled in accordance with all relevant laws and regulations.

Hazard Warnings



Broken glass hazard



Chemical inhalation hazard



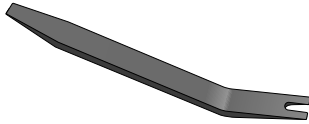
Chemical exposure hazard



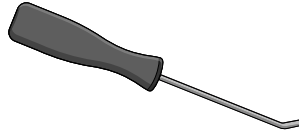
Rechargeable battery hazard

Recommended Tools

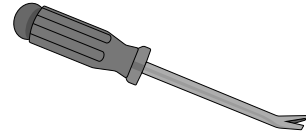
Miniature plastic pry bar



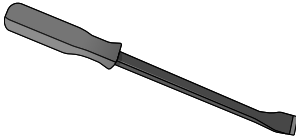
Miniature pry bar



Nail-pulling screwdriver



Screwdriver-handle
pry bar



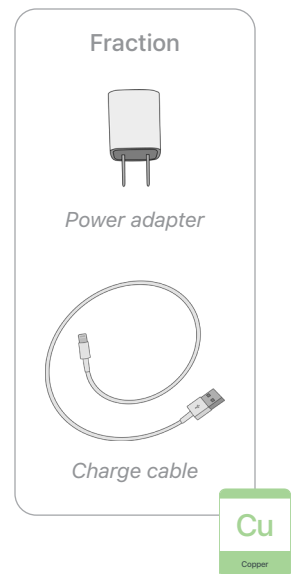
Disassembly Instructions

1. Remove the power adapter and charge cable.

» *Turn off the iPhone.*



» *Unplug the power adapter. Disconnect both ends of the charge cable.*



2. Remove the display.



Broken glass hazard

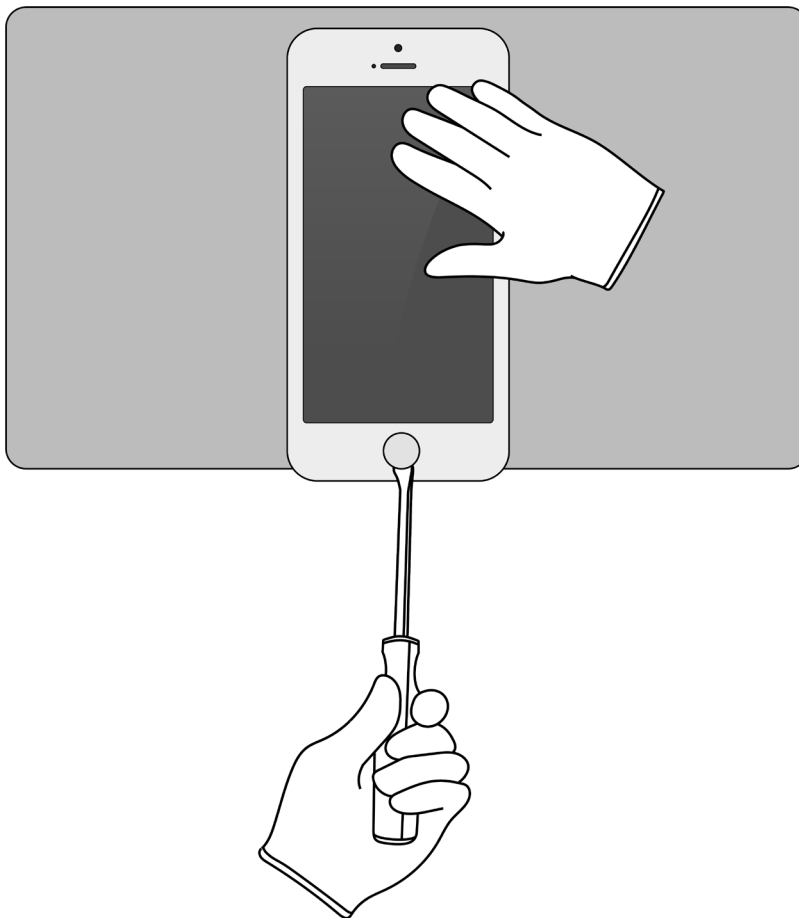


Chemical exposure hazard

Tools Used



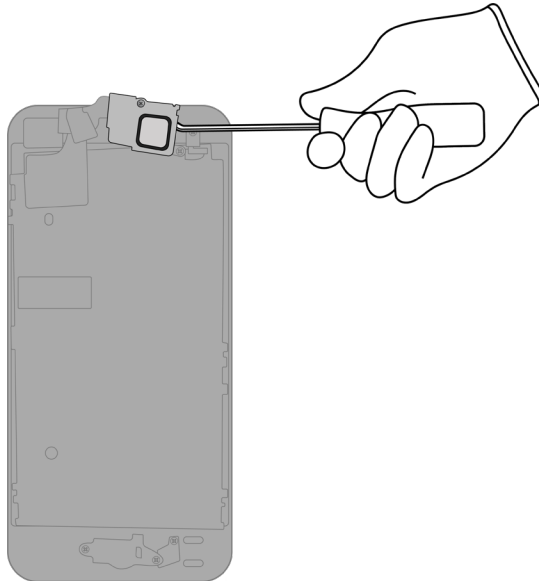
- » *Hold the iPhone at the edge of a counter with the display face up and the Lightning connector toward the counter edge.*
- » *Insert the tool tip into the Home button/Touch ID sensor. Push the handle down to pry the display from the enclosure.*



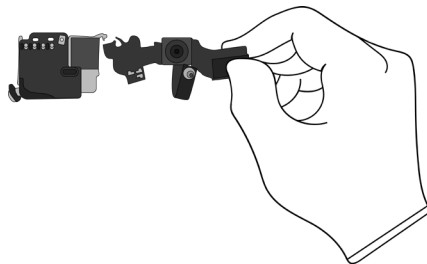
- » *Remove the display by hand. Set the enclosure aside.*

3. Remove the front camera and the receiver.

- » With the display facing down, pry off the front camera and the receiver.



- » Separate the front camera from the receiver by hand.



Tools Used



Fraction

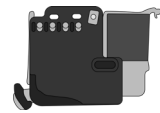


Front camera

PMs

Precious Metals

Fraction

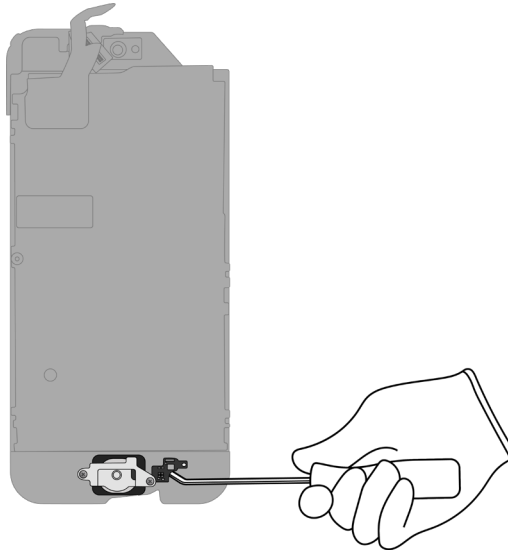


Receiver

REE

Rare Earth Elements

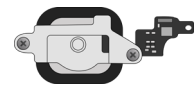
4. Pry off the Home button/Touch ID sensor.



Tools Used



Fraction

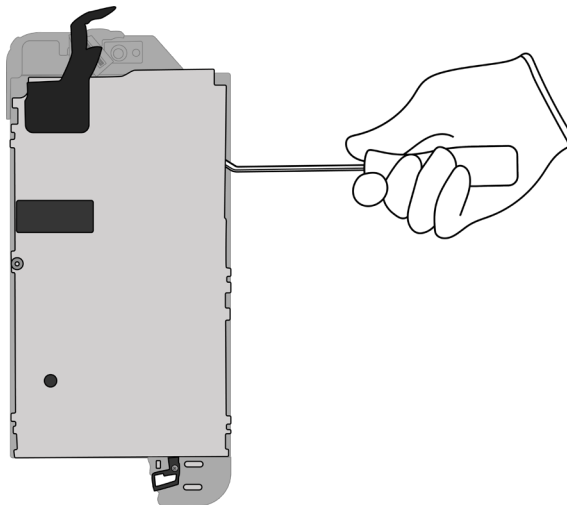


Home button/
Touch ID sensor

Cu

Copper

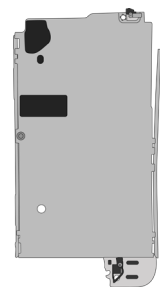
5. Pry off the display cover.



Tools Used



Fraction



Display cover

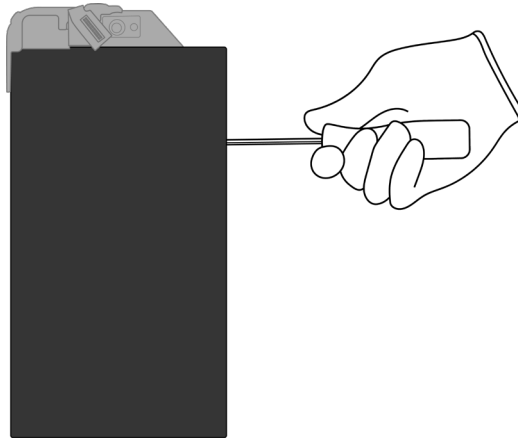
Fe

Ferrous

6. Pry off the display films and the LED logic board.



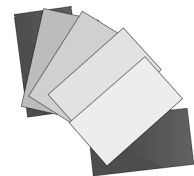
Chemical inhalation hazard



Tools Used



Fraction



Display films

PL

Plastics

Fraction

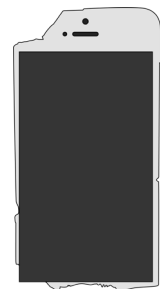


LED logic board

PMs

Precious Metals

Fraction



LCD cell

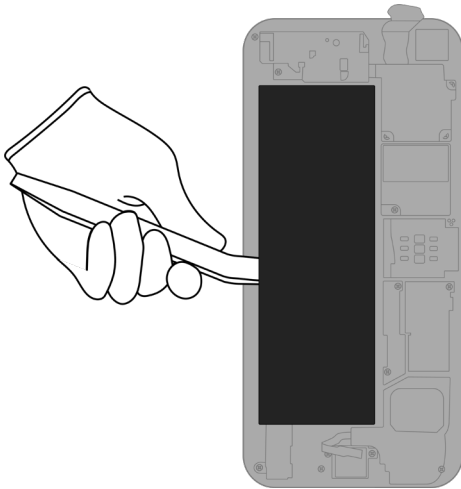
GL

Glass

7. Inside the enclosure, carefully remove the lithium-ion polymer battery.



Rechargeable battery hazard



Tools Used



Fraction

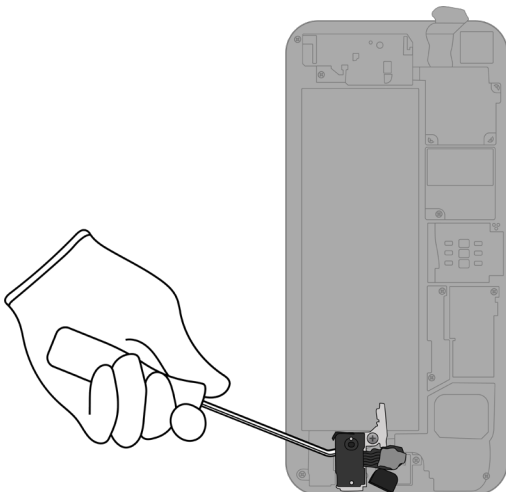


Lithium-ion
polymer battery

BT

Battery

8. Pry off the headphone jack.



Tools Used



Fraction

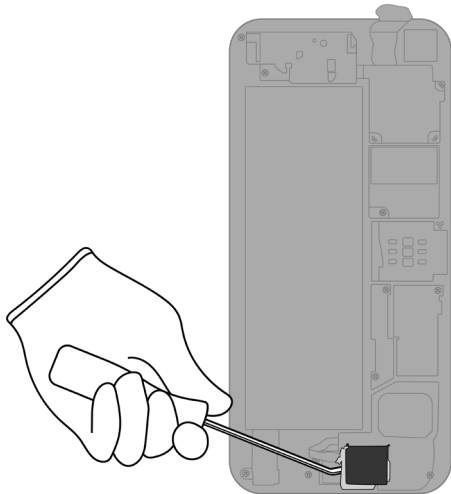


Headphone jack

Cu

Copper

9. Pry off the Lightning connector.



Tools Used



Fraction

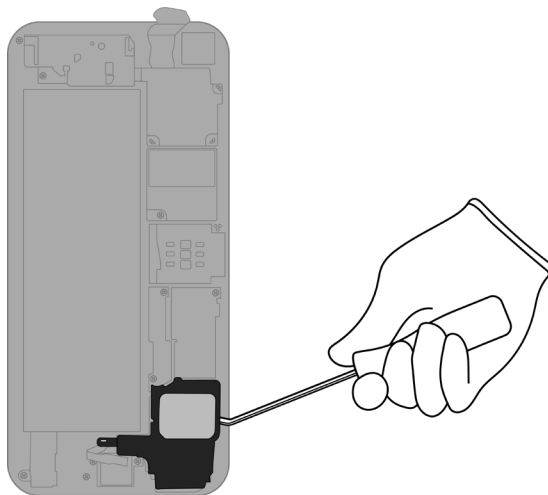


Lightning connector

Cu

Copper

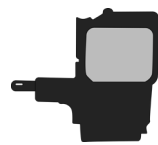
10. Pry off the speaker.



Tools Used



Fraction

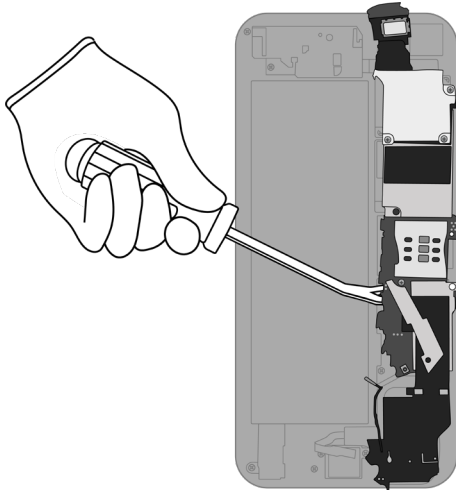


Speaker

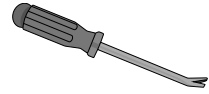
REE

Rare Earth Elements

11. Pry off the main logic board.



Tools Used



Fraction

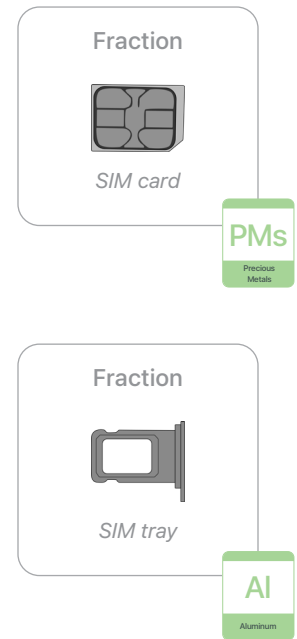
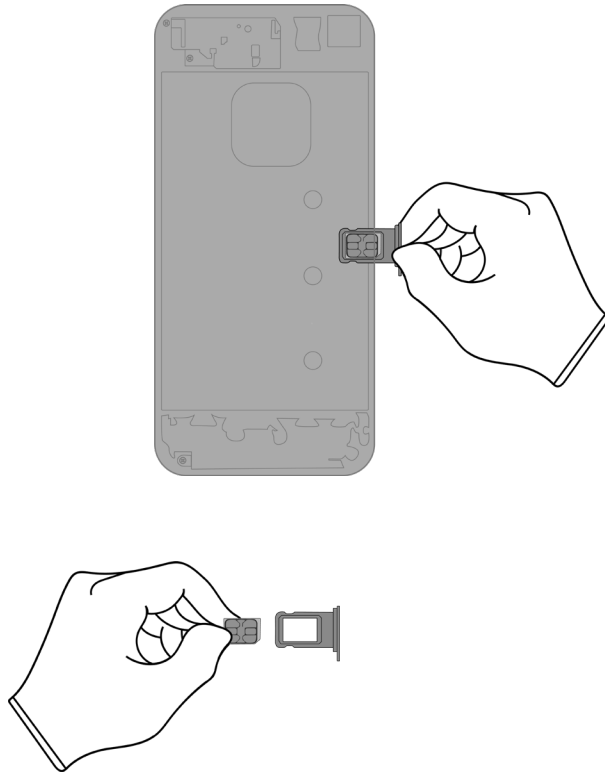


Main logic board

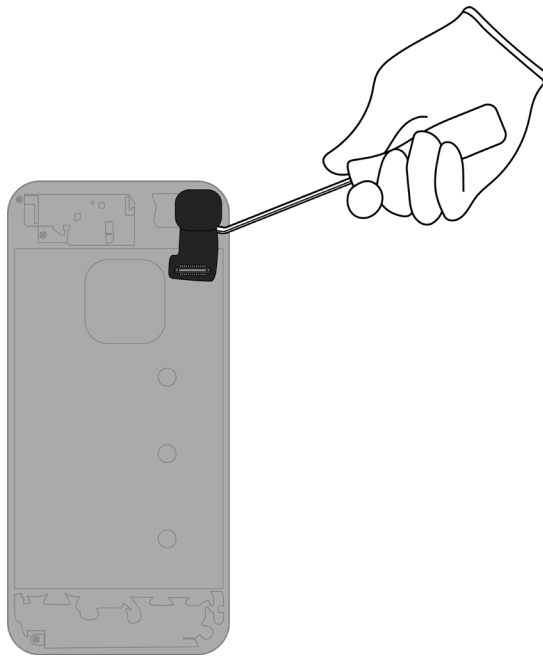
PMs

Precious Metals

- 12.** Remove the SIM card and SIM tray by hand.
Separate the SIM card from the SIM tray.



13. Pry off the rear camera.



Tools Used



Fraction

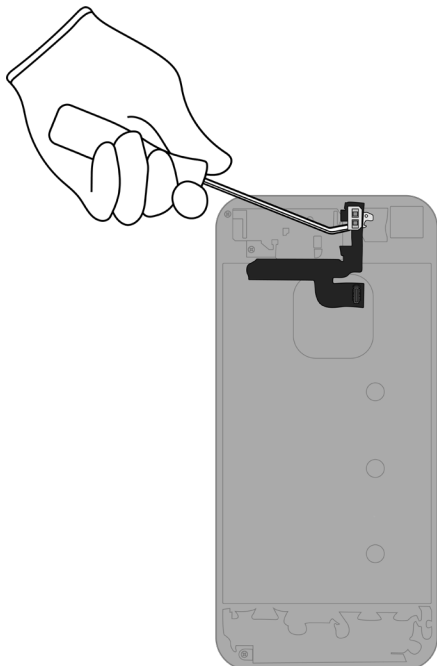


Rear camera

PMs

Precious Metals

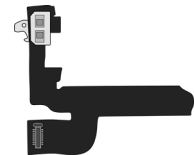
14. Pry off the strobe.



Tools Used



Fraction

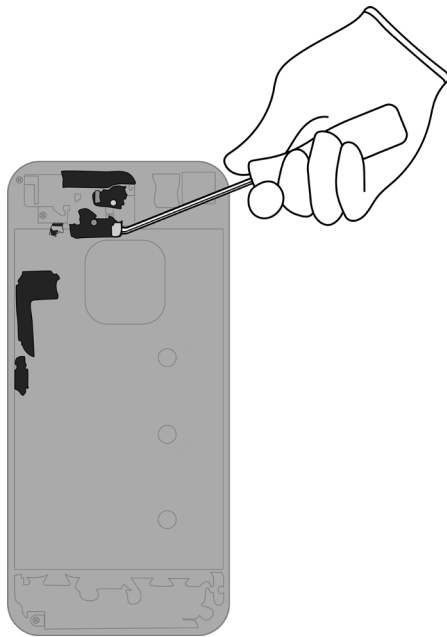


Strobe

Cu

Copper

15. Pry off the ribbon cables.



Tools Used



Fraction

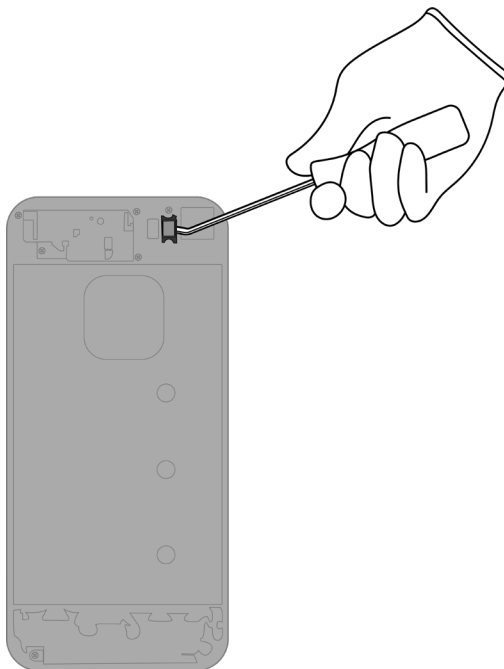


Ribbon cables

Cu

Copper

16. Pry off the microphone.



Tools Used



Fraction

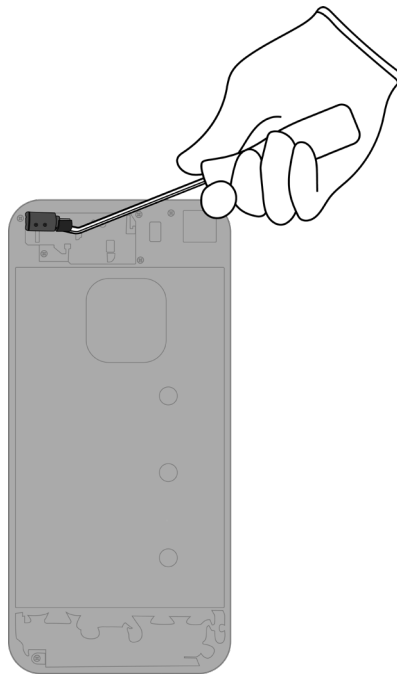


Microphone

Cu

Copper

17. Pry off the vibration motor.



Tools Used



Fraction

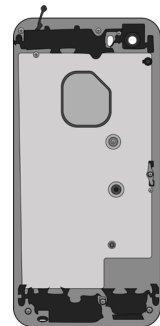


Vibration motor

Cu

Copper

Fraction



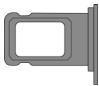






Enclosure

Al

Aluminum

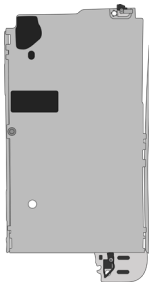
Material Categorization of Output Fractions

All outputs from this process must be managed, handled, and disposed of in accordance with applicable waste laws and regulations, including but not limited to the Waste Framework Directive and its national enactments in Europe.

| Fraction | Downstream Processing |
|---|---|
| <div>Aluminum</div> <div> SIM tray</div> <div> Enclosure</div> | <div>Primary Target Material</div> <div> Aluminum</div> <div>Potential Additional Materials</div> <div> Ferrous</div> <div> Plastics</div> |
| <div>Batteries</div> <div> Lithium-ion polymer batteries</div> | <div>Primary Target Material</div> <div> Battery</div> |

| Fraction | Downstream Processing |
|----------|-----------------------|
|----------|-----------------------|

Ferrous



Display cover

Primary Target Material



Glass



LCD cell

Primary Target Material



Potential Additional Materials



Fraction

Downstream Processing

Logic Boards



Front camera



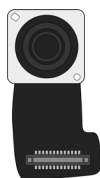
LED logic board



Main logic board



SIM card



Rear camera

Primary Target Material



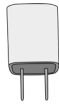
Potential Additional Materials



Fraction

Downstream Processing

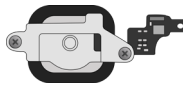
Mixed Electronics



Power adapter



Charge cable



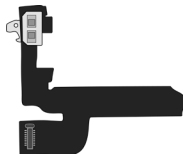
Home button/Touch ID sensor



Headphone jack



Lightning connector



Strobe



Ribbon cables

Primary Target Material



Potential Additional Materials



| Fraction | Downstream Processing |
|----------|-----------------------|
|----------|-----------------------|

Mixed Electronics (cont.)

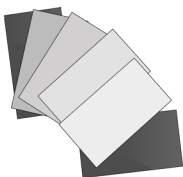


Microphone



Vibration motor

Mixed Plastics

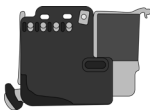


Display films

Primary Target Material



Rare Earth Magnets



Receiver



Speaker

Primary Target Material



Potential Additional Materials

