



Apple Remote Desktop 3

Technology Overview

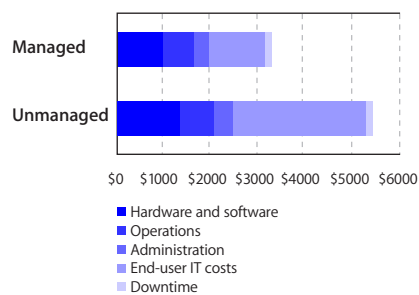
April 2006



Contents

Page 3	Introduction Desktop Management Made Easy What's New in Apple Remote Desktop 3
Page 6	Setting Up Apple Remote Desktop 3 Getting Started Setting Up Client Computers Discovering and Organizing Computers
Page 12	Software Distribution Network Copy Performance Installing Software
Page 16	Asset Management Remote Spotlight Search Usage Reports Hardware Reports Reporting Using Task Server Software Reports
Page 22	Remote Administration Remote Shell Scripts Remote Boot Disk Selection
Page 25	Remote Assistance Observe and Control Multi-Observe with System Status Indicators Screen Sharing and Text Messaging
Page 28	Automation
Page 29	Product Details
Page 30	Technical Specifications

Introduction



Managed computers have 40 percent lower total cost of ownership.

Source: Summary TCO Analysis for Windows XP, Table 1 and Table 3, "Use Best Practices to Reduce Desktop PC TCO, 2005–2006 Update," 8 December 2005, Michael A. Silver, Federica Troni, Gartner, Inc.

Desktop Management Made Easy

Every Mac computer is easy to use and simple to maintain—thanks to advanced Mac OS X features like Software Update, powerful preferences, and built-in networking. Now with Apple Remote Desktop 3, you can enjoy the same ease of use when you're managing more than one Mac. Whether you're responsible for a small business with a few computers, a midsize creative group, or an educational institution with a network of thousands, Apple Remote Desktop 3 enables you to manage all these computers—all from your own Mac.

Apple Remote Desktop 3 is a suite of integrated desktop management tools that facilitate a wide range of IT tasks. Using a single affordable product, you can distribute software, control and configure computers, offer live online help and training, run detailed reports, and implement security policies. Because Apple Remote Desktop allows you to work remotely and efficiently, you can accomplish more in less time—without ever needing to leave your desk and often without interrupting your users.

Software distribution. Apple Remote Desktop 3 makes it easy to install or copy software across a network of Mac computers, including remote systems. You can ensure that all systems in your organization are running the most current version of Mac OS X or running the same applications, fonts, and templates.

Asset management. Using the Spotlight technology in Mac OS X Tiger, Apple Remote Desktop 3 can perform detailed searches on all your Mac OS X systems. You can quickly generate comprehensive user histories and application usage reports, as well as hardware and software inventories about servers, desktop systems, and portable computers.

Remote administration. Apple Remote Desktop 3 gives you the tools to perform administration tasks from the comfort of your own office. Configure systems, run applications, empty the Trash, log out current users, set the startup disk, and lock screens—from anywhere on the network.

Remote assistance. Apple Remote Desktop 3 enables you to observe or control any number of remote Mac or Virtual Network Computing (VNC)–enabled computers. New features for managing Mac computers include easy drag and drop of files, remote copy and paste of text and images, and Curtain Mode for concealing sensitive information from users. And thanks to innovative screen sharing, you can provide help and training to users without leaving your desk.

Apple integrates these essential IT management capabilities in an accessible interface designed for first-time users—making it easy to discover and manage computers on your network and to perform multiple management commands in sequence. For anyone managing a group of Mac computers, Apple Remote Desktop 3 is an innovative application that streamlines your workflow while reducing support costs, improving system management, and increasing security.



What's New in Apple Remote Desktop 3

Built to leverage the powerful capabilities in Mac OS X Tiger, the world's most advanced operating system, Apple Remote Desktop 3 offers more than 50 new features for managing networked Mac OS X systems. These include:

- **Remote Spotlight search.** With the revolutionary Spotlight technology in Mac OS X Tiger, you can perform lightning-fast searches on remote systems. Summary results for each client are updated instantly as results are returned. Administrators can view details or refine searches further using additional qualifiers on different types of metadata. Results can be viewed on remote client systems, copied back to the administrator system, or deleted.
- **Remote Desktop widget.** This new Dashboard widget provides you with instantaneous, at-a-glance views of remote computers in your system. The Remote Desktop widget is fully integrated with the computer lists that you've defined in Apple Remote Desktop.
- **Automator actions.** Apple Remote Desktop 3 includes more than 30 Automator actions. Administrators can chain actions together to create powerful system administration workflows. Save your Automator workflows as plug-ins to provide an easy, customized interface to Apple Remote Desktop capabilities.
- **Remote Drag and Drop.** Transfer files between two computers easily by dropping a file or folder from your computer onto a remotely controlled computer—or from a remote computer onto your own.
- **Remote Copy and Paste.** Copy and paste information between your local computer and a remote computer.
- **AutoInstall.** With automatic, policy-based installation of software packages, you can stage software to install on remote, mobile, or offline systems. AutoInstall is ideal for distributing software to mobile computers.
- **Power Copy.** A new file copy engine uses multicast technology and supports 64-bit file sizes, network bandwidth limits, and optional encryption of data streams. A new permissions editor can specify the user and group ownership permissions of a copied file on a remote computer.

- **Curtain Mode.** When controlling a remote computer, administrators can now choose to block the remote user's view of the desktop with a virtual "curtain."
- **User History report.** Administrators can find out which users have logged in to which computers on their network, making it easy to monitor networks for unauthorized computer use.
- **Application Usage report.** Administrators can view details on which applications have been used on remote systems, ensuring compliance with software licenses.
- **Task Templates.** Apple Remote Desktop 3 allows you to save task settings as templates for later use. The Task Template menu comes populated with more than 30 sample UNIX scripts. It's also easy to add your own favorites to the list for convenient access.

Setting Up Apple Remote Desktop 3



Apple Remote Desktop 3 gives you all of the tools you need to manage the Mac computers on your network—whether you're distributing software, providing online assistance, or collecting information about hardware and software assets. You can manage computers individually or multiple computers at the same time.

Getting Started

To get started with Apple Remote Desktop, install the administration software on the system you will use to manage remote Mac computers. Client software is built into Mac OS X version 10.3 Panther and later, so it's easy to implement Apple Remote Desktop 3 across your organization. Apple Remote Desktop 3 is available in two versions: a 10 Managed Systems edition for small workgroups and an Unlimited Managed Systems edition for managing more than 10 clients.

Client authentication

To manage a Mac OS X system using Apple Remote Desktop, administrators need to authenticate and receive authorization from the Apple Remote Desktop Client software—ensuring that only authorized users can control a computer or perform specified administrative tasks.

Apple Remote Desktop can perform authentication and authorization against your organization's directory server. Or for organizations that rely on the local computer for authentication, Apple Remote Desktop supports authentication against one or more local accounts.

Security and encryption

Apple Remote Desktop 3 uses 128-bit AES encryption to ensure that all remote communications are secure, even over the Internet, with client computers running Mac OS X v10.3 or later. For screen control and file copy tasks, where encrypting large amounts of data may significantly degrade performance, administrators can choose encryption for improved security or leave encryption off for better performance.

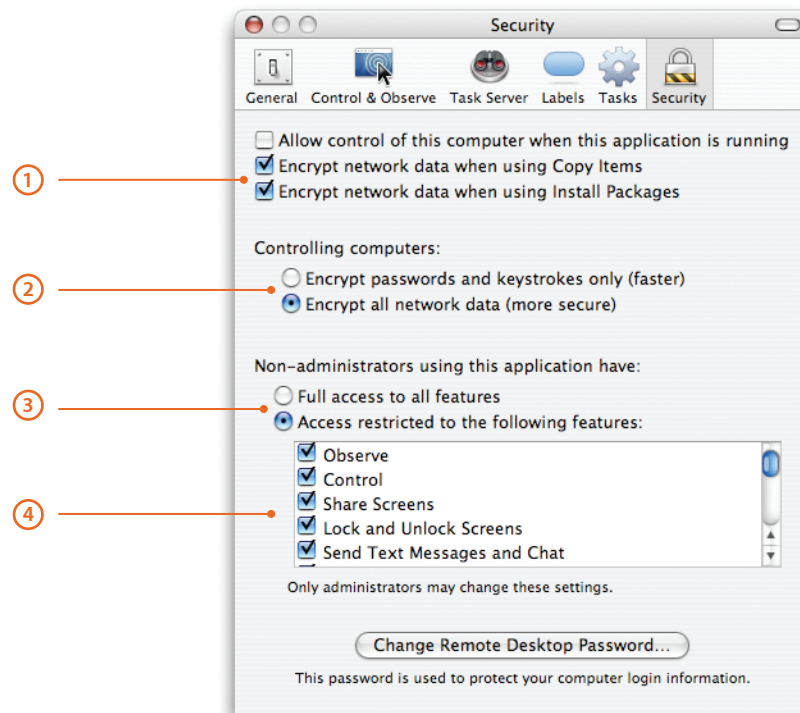
Using a Task Server

A Task Server can collect reporting data on a scheduled basis or execute the new AutoInstall feature in Apple Remote Desktop 3, ideal for updating software on mobile systems whenever they connect to the network. By assigning a Task Server to perform these tasks, you can free up the administrator computer for handling critical management demands.¹

User mode

If you wish to allow non-administrator users to implement specific features of Apple Remote Desktop 3, you can enable or disable features in the Apple Remote Desktop Security preference pane. This can be useful for classroom teachers or less technical users who need to perform a limited set of desktop management tasks without reliance on the administrator.

Security Preference Pane



① **Security options for file copy and package installation.** Specify whether network data should be encrypted when copying files or installing packages.

② **Security options for controlling computers.** Specify whether all network data should be encrypted during a control session or just passwords and keystrokes.

③ **Toggle user mode.** Allow non-administrator users full or partial access to the feature set of Apple Remote Desktop 3.

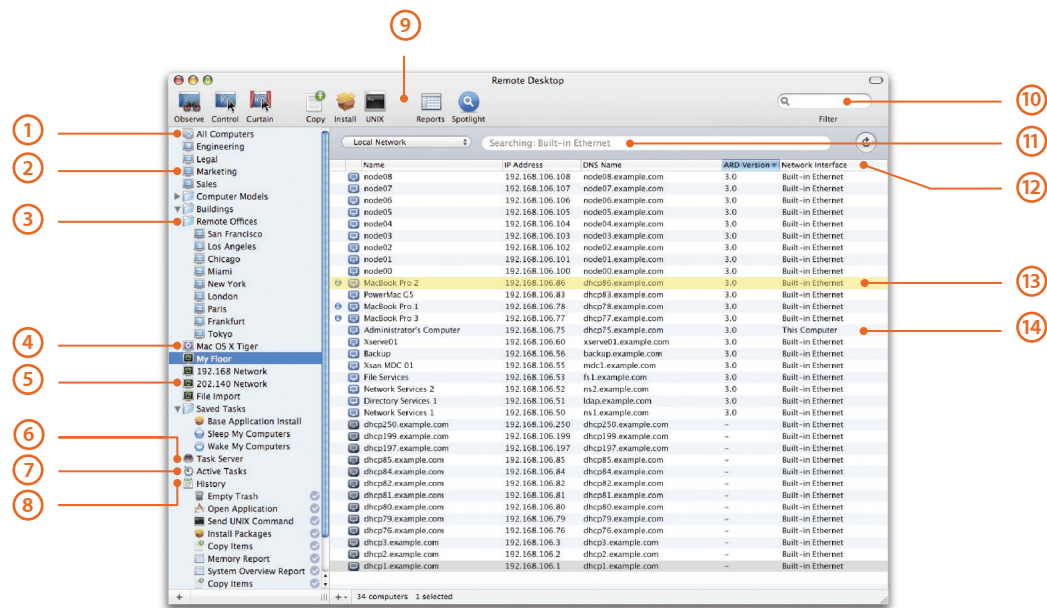
④ **Specify features.** Specify which Apple Remote Desktop features non-administrator users can access.

Setting Up Client Computers

After installing the administration software, you need to install and enable the Apple Remote Desktop Client software on the computers you wish to manage. If you are installing the client software for the first time, you can use Setup Assistant in the administration application to create a custom install package.

If the client systems already have Apple Remote Desktop Client version 1.2 or later,² you can upgrade them from the administration application. Setup Assistant makes it easy to centrally upgrade the client software and update the client settings on one or multiple Mac systems.

Main Apple Remote Desktop Window with Scanner Selected



- 1 **All Computers list.** As you add computers to individual computer lists, the All Computers list is updated.
- 2 **Group.** Use groups to organize your computer lists and tasks.
- 3 **Computer lists.** To help you organize computers, you can create as many computer lists as you need. For example, you can have a computer list for each location and each department in your organization.
- 4 **Smart Computer Lists.** Similar to Smart Playlists in iTunes, this feature lets you dynamically create a computer list that matches the rules and conditions you've specified. Use one or more of the following attributes to construct your smart lists: Name, IP Address, DNS Name, Label, Apple Remote Desktop Version, Boot Volume, Installed RAM, CPU Information, Machine Model, Mac OS Version, and Computer is in List.
- 5 **Network scanners.** Quickly discover the computers that you need to manage. Create as many network scanners as you need and configure each to search specific areas of your network.
- 6 **Task Server list.** Find all the tasks that are currently executing on the Task Server.
- 7 **Active Tasks list.** Find all queued and executing tasks.
- 8 **History list.** Find completed tasks, specifying how many you wish the list to display. Additional details on past tasks can be viewed using the Task History window.
- 9 **Configurable toolbar.** Customize the toolbar with the commands that you use frequently. Change the appearance of the toolbar and how the icons and text are displayed.
- 10 **Filter.** Enter text to filter the results displayed in the computer list details.
- 11 **Network scanner types.** Network scanners operate in one of four modes: local network; network address range; network address or DNS computer name lookup; or importing a list of computer names or network addresses from a file. Scans work across all available network interfaces, such as built-in Ethernet, AirPort, and IP over FireWire.
- 12 **Customizable list views.** Customize which attributes are displayed for each computer: Name, Current Application, Current User, IP Address, DNS Name, Label, Apple Remote Desktop Version, Ethernet ID, Mac OS Version, Computer Info Fields 1–4, Machine Model, CPU Information, Installed RAM, and Startup Disk.
- 13 **Labels.** To easily identify computers and organize them into your own custom categories, you can label computers using one of seven colors.
- 14 **Detailed view.** View details on network devices: whether the computer is already included in a computer list, if the computer has the Apple Remote Desktop Client software configured (and its version), or if the computer is VNC enabled (and its network address).



Remote control of server systems

Apple Remote Desktop 3 enables you to control Xserve systems as well as Mac computers from anywhere on your network—even from a virtual private network from home. Because servers are often “headless” and in remote locations, Setup Assistant in Mac OS X Server includes a one-click option to install and configure the Apple Remote Desktop client. Also available is a command-line utility for configuring software on the server.

Discovering and Organizing Computers

Once you’ve enabled the client computers, you can discover them using the built-in network scanners and organize them using computer lists. Computers located on the same subnet as the administrator show up automatically. You can search for computers outside your subnet—or if you know the address of a computer you wish to add, you can specify that name or IP address.

Network scanners

To discover Mac systems that are Apple Remote Desktop enabled or VNC enabled, each network scanner uses one of four methods: Bonjour, network address range search, network address or DNS name lookup, or file import of network addresses or DNS names.

Organizing computers

After discovering the computers on your network, you can organize them into lists. By default, the All Computers list includes all enabled computers. Administrators can create additional lists, organizing computers by computer model, by organization, or by location.

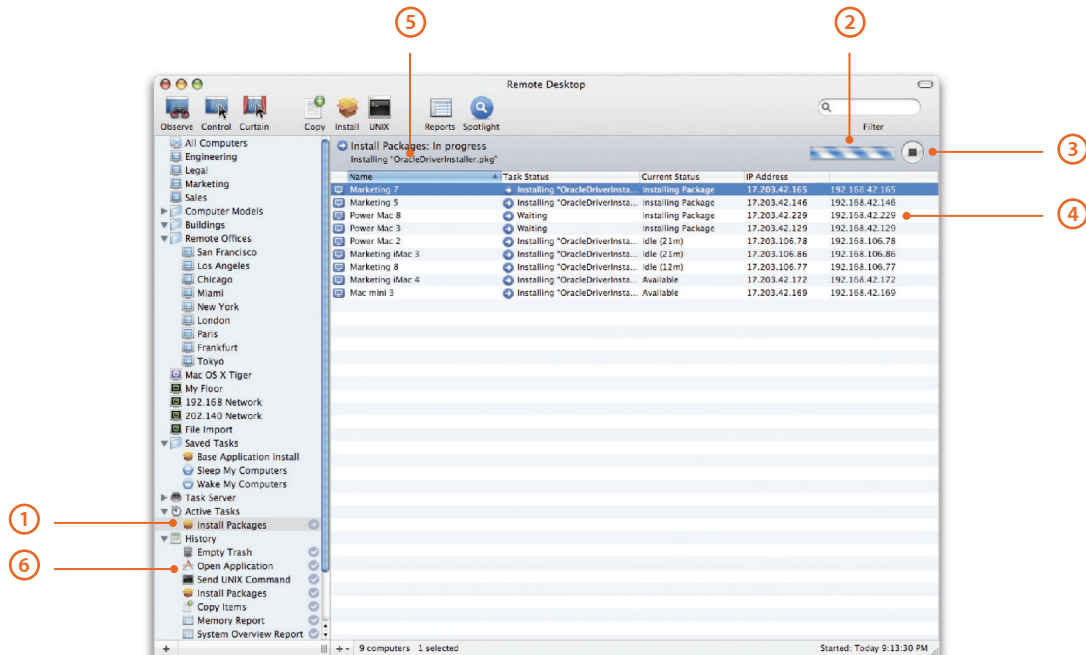
Inspired by the iTunes Smart Playlist, Apple Remote Desktop 3 features Smart Computer Lists that allow an administrator to define a set of rules. Any computer that meets the criteria will be included in the smart list. If a new computer meets the criteria, it is automatically added to the list, as is an existing computer that is modified and now meets the criteria.

Apple Remote Desktop 3 also includes a Group feature that allows you to place tasks, computer lists, or scanners in their own folder. And with the ability to label computers, administrators can tag a computer with a particular color for quick and easy reference.

Task lists

Apple Remote Desktop tasks can be executed immediately, scheduled to run at a specified date and time, or saved for future execution. To streamline the administration of Mac OS X systems, Apple Remote Desktop 3 allows you to view lists of running, queued, and completed tasks. You can also create new tasks by running saved tasks with different parameters.

Task Progress with Software Installation



- ① **Active Tasks list.** View all current and queued tasks.
- ② **Task progress.** View the overall status of the task.
- ③ **Stop button.** Halt the execution of the task.
- ④ **Detailed view.** View detailed information on the progress and status of the task.

- ⑤ **Summary information.** View a dynamic summary of the task: its progress and how many computers succeeded or failed in executing the task.
- ⑥ **History list.** Icons provide an at-a-glance overview of the success or failure of completed tasks.

Task History

Apple Remote Desktop 3 allows you to view a list of your previously executed tasks, as far back as you choose. Past tasks are organized by day, so administrators can review them quickly. Administrators can also choose to reapply or reuse any of the tasks that they have previously executed.

Task History Window

Task	Status	Last Run
Memory Report	Succeeded on all	9:18:53 PM
Unlock Screen	Succeeded on all	9:17:31 PM
Lock Screen	Succeeded on all	9:17:28 PM
Empty Trash	Succeeded on all	9:17:14 PM
Send UNIX Command	Succeeded on all	9:17:08 PM
Open Application	Succeeded on all	9:17:00 PM
Copy Items	Succeeded on all	9:16:26 PM
System Overview Report	Succeeded on all	9:16:04 PM
Set Startup Disk	Succeeded on all	9:15:50 PM
Open Items	Succeeded on all	9:15:29 PM
Copy Items	Succeeded on all	9:00:31 PM
Send UNIX Command	Succeeded on all	8:48:13 PM
Install Packages	Succeeded on all	8:45:09 PM
Upgrade Client Software	Succeeded on all	8:43:34 PM
PCI Cards Report	Succeeded on all	6:51:37 PM

Computer	Address	Status
Marketing 7	192.168.106.75	Succeeded
Marketing 5	192.168.42.229	Succeeded
Power Mac 8	192.168.106.77	Succeeded
Power Mac 3	192.168.42.165	Succeeded
Power Mac 2	192.168.106.86	Succeeded
Marketing iMac 3	192.168.42.169	Succeeded
Marketing 8	192.168.42.146	Succeeded
Marketing iMac 4	192.168.106.78	Succeeded
Mac mini 3	192.168.42.129	Succeeded

1

History.

View a list of each day that tasks were executed, specifying how many days the list will display.

2

Summary.

View a list of tasks executed during that day. Double-click a task to redo.

3

Task summary.

View a summary of a specified executed task.

4

Detailed task.

View details on which computers executed the task and the status of the task for each computer.

Software Distribution



Custom install packages
Apple Remote Desktop 3 includes the Apple Package Maker utility, making it easy to create custom install packages for installation of organization-specific software. Once you've created the package, you can copy and install the software to a specified location using Apple Remote Desktop.

Apple Remote Desktop 3 is an ideal solution for installing or upgrading software across multiple Mac systems. Whether it's a new version of Mac OS X or a suite of applications, it's easy to keep all of your computers up to date—without interrupting your users or requiring any user interaction. Users don't even need to be logged in. And with the new AutoInstall feature, administrators can initiate a software installation and let Apple Remote Desktop 3 take care of the rest.

Network Copy Performance

Apple Remote Desktop 3 performs copy operations up to 11 times faster than its predecessor, Apple Remote Desktop 2.2, with best performance over a Gigabit Ethernet network.

Network copy performance: 1000BASE-T

Up to 11 times faster than version 2.2

	Remote Desktop version 2.2	Remote Desktop version 3.0	Δ
Copy Microsoft Office folder (528MB)			
Time to copy to 50 clients (seconds)	282	26	10.8x
Copy incompressible test file (1024MB)			
Time to copy to 50 clients (seconds)	477	43	11.1x

Testing conducted by Apple in December 2005 using prerelease Apple Remote Desktop software. Target machines were 50 Power Mac computers with dual-processor 2.5GHz G5, 2GB of RAM, and running Mac OS X v10.4.3.

Network copy performance: 100BASE-T

Up to 5 times faster than version 2.2

	Remote Desktop version 2.2	Remote Desktop version 3.0	Δ
Copy Microsoft Office folder (528MB)			
Time to copy to 50 clients (seconds)	273	52	5.2x
Copy incompressible test file (1024MB)			
Time to copy to 50 clients (seconds)	472	103	4.6x

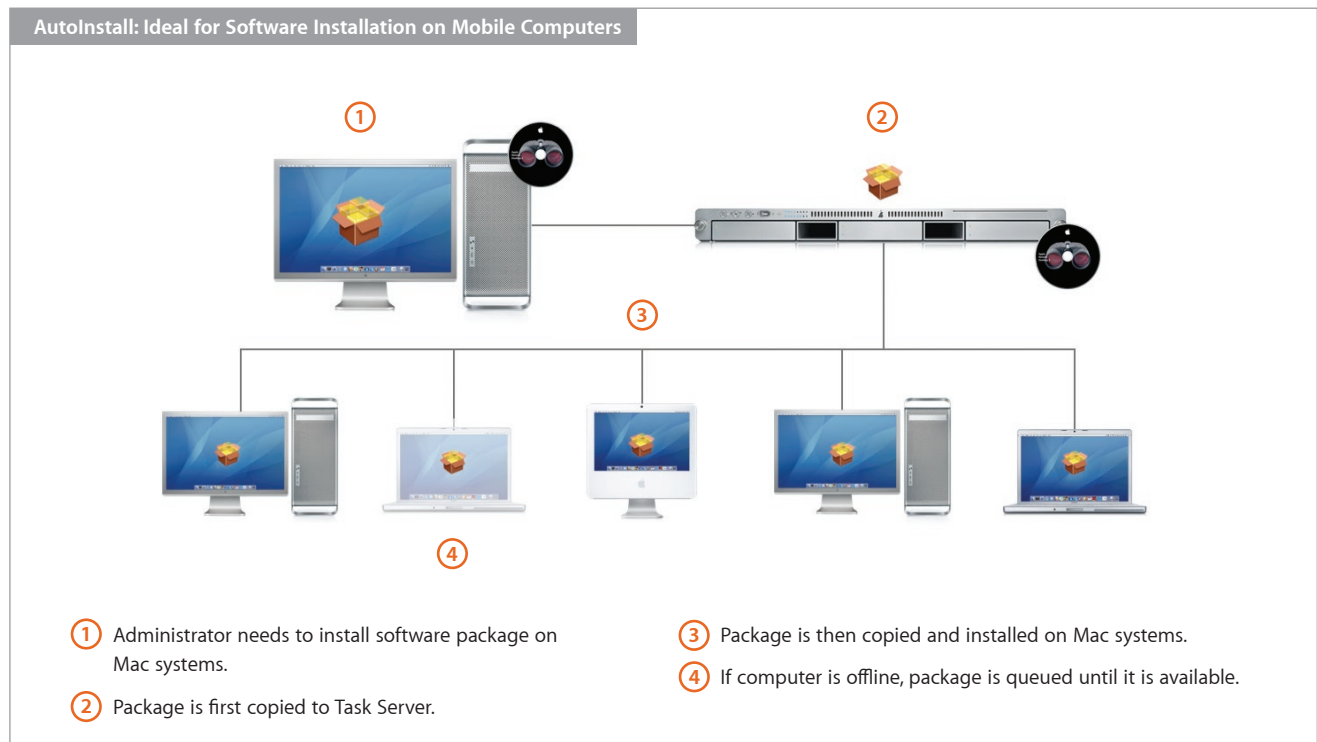
Testing conducted by Apple in December 2005 using prerelease Apple Remote Desktop software. Target machines were 50 Power Mac computers with dual-processor 2.5GHz G5, 2GB of RAM, and running Mac OS X v10.4.3.

Installing Software

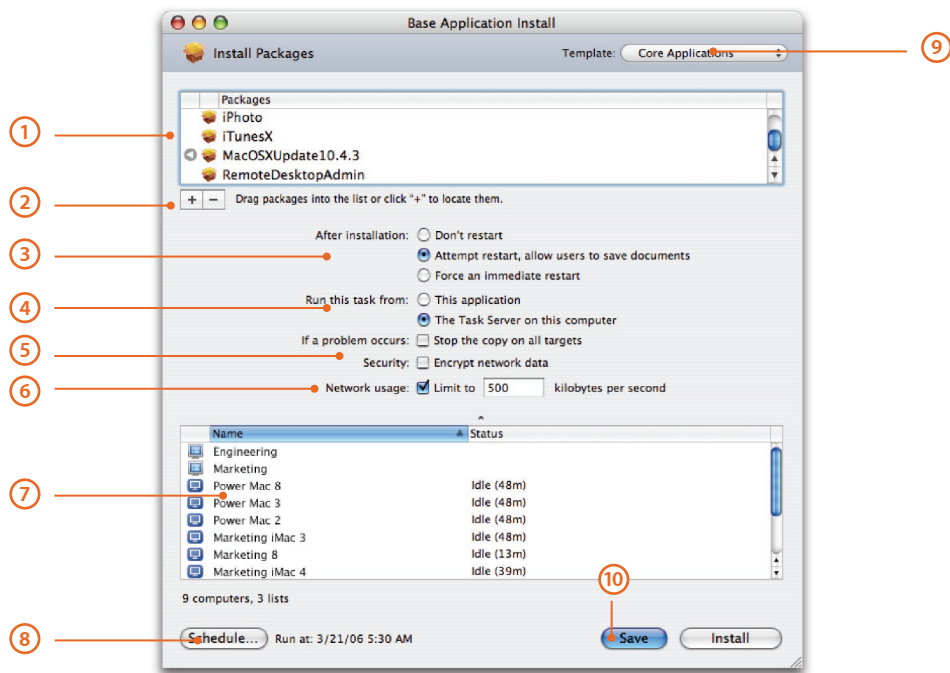
Use the Install Packages task pane to choose the software you wish to distribute. If you have more than one package to install, you don't have to wait for one installation to finish before starting the next one: Apple Remote Desktop 3 allows you to specify multiple applications for successive installation.

AutoInstall

Ideal for managing mobile computers, this new feature enables automatic, policy-based installation of software packages on remote systems. Start by using Apple Remote Desktop 3 to set up a list of target computers, whether they're offline or on the network, for software installation or update. With AutoInstall, you can copy the install package to a Task Server, which will attempt to contact the target computers. If the computers are on the network, the Task Server can execute the installation immediately. For offline clients, the Task Server holds the package and installs it automatically as soon as a target computer connects to the network, keeping track of which computers have had the software successfully installed.



Install Packages Task Pane

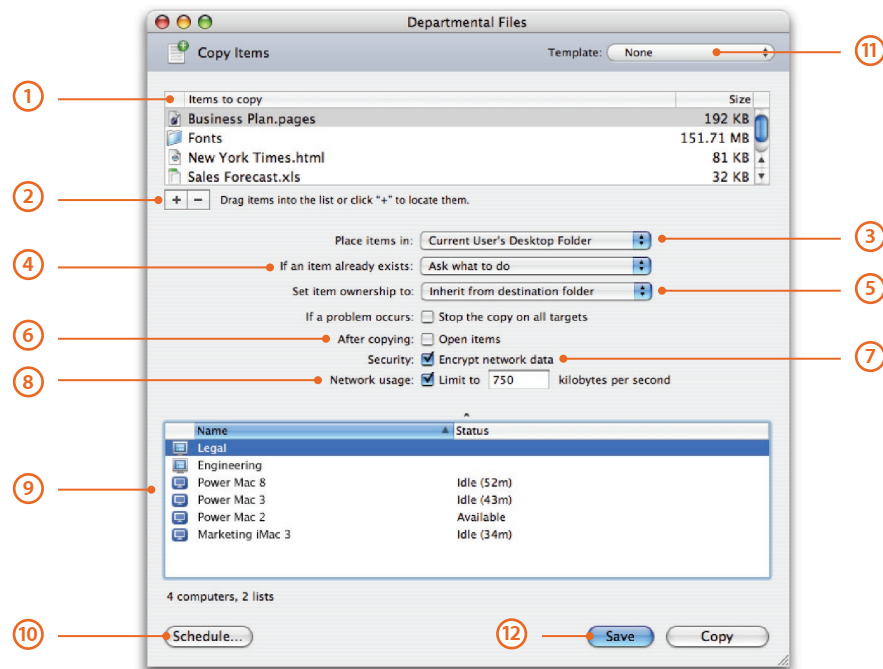


- ① **List of packages.** View list of packages (Apple .pkg or .mpkg format) to be copied and installed on target computers.
- ② **Add or remove packages.** Add or remove packages, or drag packages from the Finder onto the task window.
- ③ **Restart options.** If packages require a restart, select if users will be allowed to save documents or if the restart is immediate.
- ④ **AutoInstall.** Specify that the Task Server perform package installation. If target computers are offline, the Task Server will ensure that packages are copied and installed as soon as computers connect to the network.
- ⑤ **Encryption option.** Specify whether network data should be encrypted when copying packages.
- ⑥ **Bandwidth throttling.** Specify how much network bandwidth should be consumed by the package copy.
- ⑦ **Target computer list.** Select the computers and computer lists where you will install packages. You can drag additional computers and computer lists from the main Apple Remote Desktop window or remove computers from the list.
- ⑧ **Schedule task.** Schedule the task for a future date and time, or choose a frequency for repeating the task.
- ⑨ **Task Template.** Save task settings for later use, or apply settings from a previously saved task.
- ⑩ **Save task.** Save the task with the current configuration and target computers for later use.

After installation, your installer files are deleted from the client system automatically. Apple Remote Desktop can even restart the client system remotely. Software installations can be deployed immediately or scheduled for a later date and time—for example, when network traffic is low or when users are typically away from their computers.

For applications that require only drag-and-drop installation, you can use the File Copy feature for software distribution. File Copy is also useful for distributing files and folders, such as fonts and configuration files, to an exact location in the client's hard drive.

Copy Items Task Pane



- 1 **Items to copy.** View a list of files, folders, and applications to be copied to target computers.
- 2 **Add or remove items.** Add or remove items, or drag items from the Finder onto the task window.
- 3 **Destination.** Specify where the files, folders, and applications should be copied. The location can be the same as the location of the source file, or you can choose from several predefined locations or even specify a custom location.
- 4 **Copy options.** If an item already exists on the target computer, you can choose to be prompted, to replace the file, or to rename the file.
- 5 **Ownership settings.** Once the copy is complete, specify ownership settings from the following options: inherit from destination folder, preserve current owner, set to current logged-in user, or specify a user and group.
- 6 **Open items.** Specify whether items should be opened on remote computers after being copied.
- 7 **Encryption option.** Specify whether network data should be encrypted when copying packages.
- 8 **Bandwidth throttling.** Specify how much network bandwidth should be consumed by the file copy.
- 9 **Target computer list.** Select the computers and computer lists where you will copy files. You can drag additional computers and computer lists from the main Apple Remote Desktop window or remove computers from the list.
- 10 **Schedule task.** Schedule the task for a future date and time, or choose a frequency for repeating the task.
- 11 **Task Template.** Save task settings for later use, or apply settings from a previously saved task.
- 12 **Save task.** Save the task with the current configuration and target computers for later use.

Asset Management



As an administrator or support professional, you need to keep track of the configuration of Mac systems in your organization. Apple Remote Desktop 3 allows you to collect information on more than 200 hardware and software attributes, including memory, CPU, the version of the operating system, and hard disk size. This critical data can help you assess your organization's readiness for operating system or application updates and determine whether any additional software or hardware is needed for the migration. It's also valuable for help desk professionals to have configuration details on systems that are experiencing problems.

With the new Spotlight search capability, you can quickly search remote computers and copy the results back to the administrator computer—or delete them entirely. Also new are User History and Application Usage reports that provide specific information to help you monitor software compliance and the security of your systems.

Remote Spotlight Search

Apple Remote Desktop 3 extends the revolutionary Spotlight technology in Mac OS X Tiger, so administrators can perform comprehensive, lightning-fast searches not only on their own computer, but on any Mac on the network. Whether you're looking for a file, application, or image, Spotlight can find it. Results are returned instantly—from the first letter you type—and updated continuously with no lag times or slowdowns. You can refine searches using different metadata types or additional qualifying filters. With Apple Remote Desktop 3, administrators can display the search results on remote systems, copy results back to their own computer, or simply delete them.

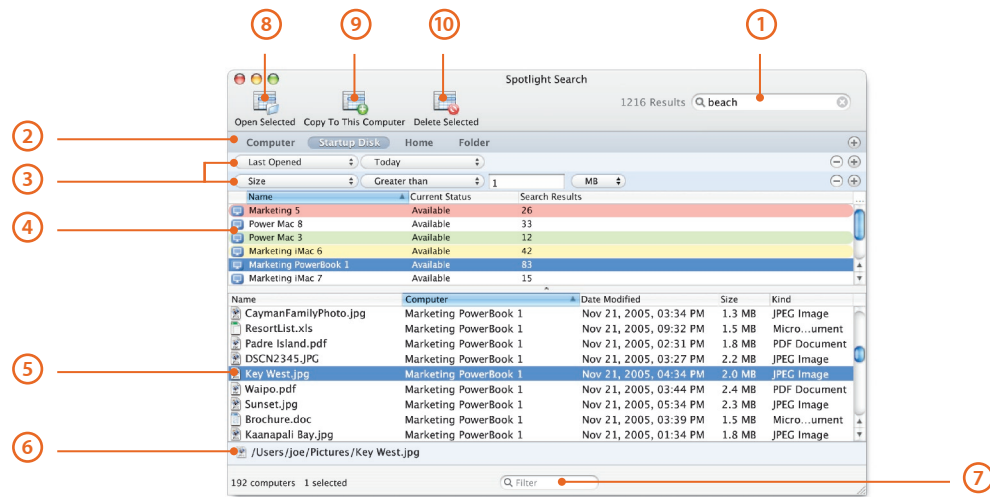
Usage Reports

The new User History report gives detailed information on who is using a computer, when they logged in and out, and how they accessed the computer. The Application Usage report details which applications have been used on remote systems, including the number of launches of an application, the duration of the launch, and who executed the launch. Administrators can use this report to ensure compliance with their software license agreements and to discover any unauthorized use of applications.

SQL database

All of the data for hardware reports is stored in the included SQL database for fast and easy retrieval. System administrators can tap into this database using any number of third-party SQL-aware tools to generate custom reports.

Remote Spotlight Search



- 1 **Search field.** Enter search words in the Spotlight-powered search field.
- 2 **Filter locations.** Filter locations to be searched on remote computers.
- 3 **Refine search options.** Add one or more rules to narrow search results.
- 4 **Target computer list.** Select computers to be searched. For each computer, the total number of search results is displayed.
- 5 **Search results view.** All files that match the search criteria are displayed.

- 6 **File path.** See the exact location of the selected file.
- 7 **Filter details.** Filter the results view to further narrow your search.
- 8 **Open selected items.** Open files on remote computers by selecting them and clicking this button.
- 9 **Copy to this computer.** Copy the files from remote computers to your computer by selecting them and clicking this button.
- 10 **Delete selected items.** Delete files on remote computers by selecting them and clicking this button.

Computer information fields

Administrators can view up to four organization-specific computer information fields, such as asset tags or AppleCare contract details. You can set these fields centrally from your computer and include them in your System Overview report or computer lists, along with other system attributes.

Hardware Reports

Hardware reports cover details on hard drives, network interfaces, memory, USB and FireWire devices, and PCI cards.

System Overview. This report provides information about a client's processor and memory, system software, AirPort setup, attached devices, displays, network settings, system preferences, printer lists, and key software attributes. The report can be used to identify problems, verify system configurations before installing new software, or determine how many devices of a particular type, such as scanners, are being used in a particular lab.

Storage. Information about the client's internal hard disks includes the hardware itself, the volumes on the disk, file system information, and journaling information.

Network Interfaces. This report provides information for all active and inactive network interfaces, including detailed network input, network output, and Ethernet statistics from the client computer. Use this information to identify network errors or faulty network equipment, troubleshoot network performance, and query the network settings of client computers.

Memory. Specific information about the memory (RAM) installed in the client system includes each memory module's size, type, speed, and slot location. Memory reports can be used to manage computer resources, troubleshoot hardware, or determine which client computer can best handle a memory-intensive application or task.

FireWire Devices. Information on FireWire devices connected to the client computer includes the manufacturer, model, speed, software version, and firmware version for each device.

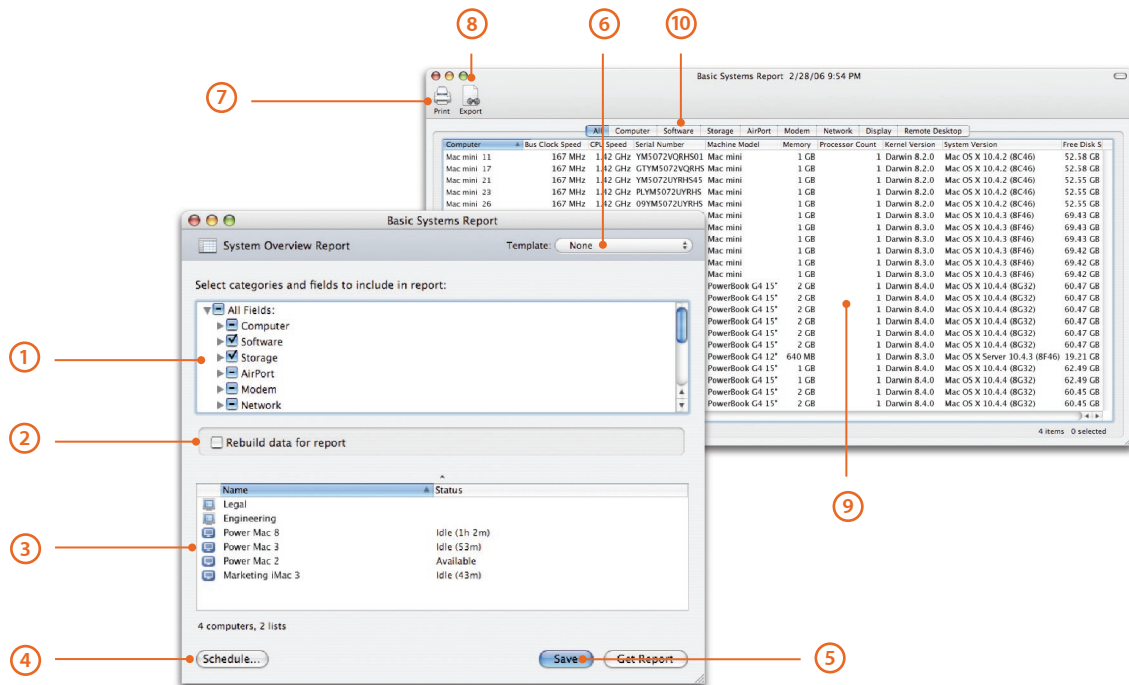
USB Devices. Information on Universal Serial Bus devices connected to the client computer includes product name and ID, vendor name and ID, speed, and bus power for each device.

PCI Cards. This report provides specific information about the PCI cards—such as card name, type, and vendor ID—installed in a client computer, as well as the card's slot location.

Network Performance. This test measures and troubleshoots the communication between client computers and the administrator system. Use the report to help identify reasons for network communication problems that could affect Apple Remote Desktop. For example, if there are issues copying items to a particular client computer, the Network Performance report can isolate the problem to a particular cable or hub.

Administration Settings. This report shows which Apple Remote Desktop 3 administration privileges are enabled or disabled. These privileges can also be found in the Sharing or Remote Desktop pane of System Preferences on individual client computers.

System Overview Report with System Overview Result



- ① **System attribute selection.** Collect and view information on more than 100 system attributes, organized by categories. Choose all the attributes of a category, or specify individual attributes within each category.
- ② **Cached report settings.** Specify whether to generate a report from the SQL database based on fresh data or existing data.
- ③ **Target computer list.** Select the computers and computer lists to be searched. You can drag additional computers and computer lists from the main Apple Remote Desktop window or remove computers from the list.
- ④ **Schedule task.** Schedule the task for a future date and time, or choose a frequency for repeating the task.
- ⑤ **Save task.** Save the task with the current configuration and target computers for later use.
- ⑥ **Task Template.** Save task settings for later use, or apply settings from a previously saved task.
- ⑦ **Print.** Print the report or save it as a PDF file.
- ⑧ **Export.** Export the contents of your report to a comma- or tab-delimited text file, which can then be imported into another program, such as a spreadsheet.
- ⑨ **Results.** View information about the requested system attributes, with each row containing information about one computer. Click the columns to sort the data.
- ⑩ **Category filter.** Click a category filter to display only the information about the attributes in that category, filtering out all other data.

Reporting Using Task Server

You can use a computer other than the administrator computer to collect reporting data on an automated basis. By using a computer as a Task Server, you can always be ready for client computers to send their reporting information—while freeing up the administrator computer for other management tasks.

Software Reports

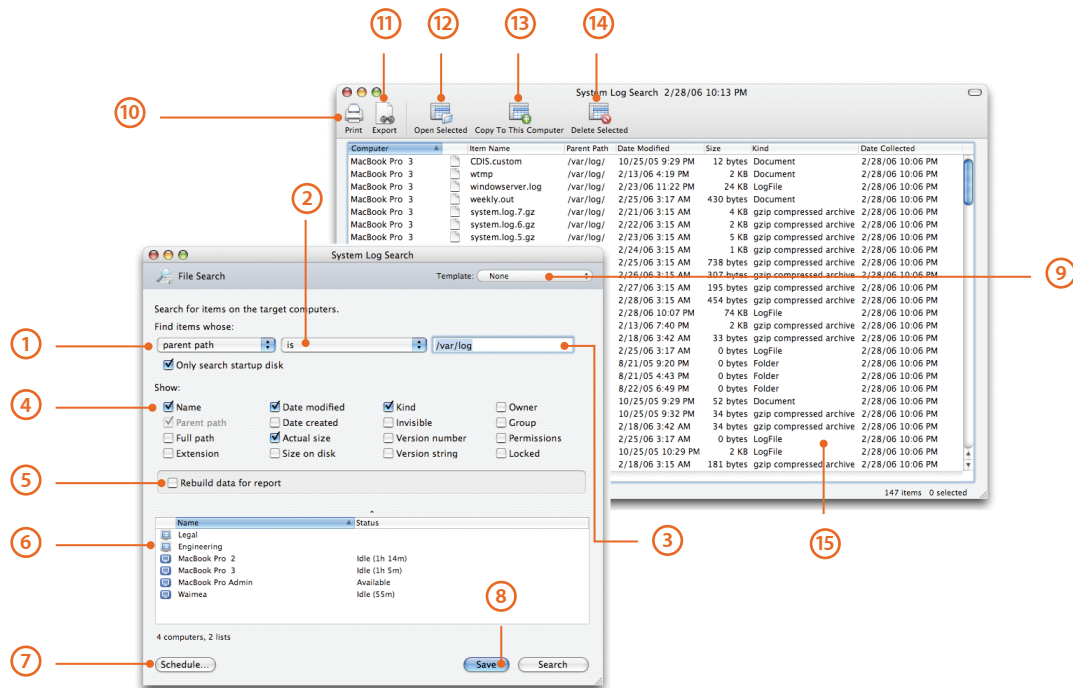
In addition to Spotlight search, Apple Remote Desktop 3 includes three types of software reports that provide details on file system attributes and installed application versions, as well as the results of its powerful file search capabilities.

File Search. Specific information about files and folders on client systems allows you to audit installed applications. For example, to check compliance with license agreements, you can identify how many copies of a particular application are in use. You can also use File Search to search by file size, helping you identify large files and applications that may be taking up too much space on the hard drive.

Software Version. Use this report to make sure that users have the latest and most appropriate application versions for their systems.

Software Difference. This report can help you detect application versions that are out of date, nonstandard, or otherwise unacceptable—or learn whether a user has installed an unauthorized application.

File Search with File Search Result



- 1 Attribute selector.** Choose from 16 file system search attributes: name, parent path, full path, extension, date modified, date created, actual size, size on disk, kind, visibility, version number, version string, owner, group, permissions, and lock status.
- 2 Attribute qualifier.** This pop-up list provides choices that can help narrow your search; when searching for names, you can use qualifiers such as "includes" or "begins with."
- 3 Search term.** Provide values to search that will be used in conjunction with the attribute qualifier to perform the search.
- 4 View options.** Select which file attributes should be displayed in the search results window.
- 5 Cached report settings.** Specify whether to generate a report from cache or collect fresh data.
- 6 Target computer list.** Provides a list of computers and computer lists that will be searched. You can drag additional computers and computer lists from the main Apple Remote Desktop window or remove computers from the list.
- 7 Schedule task.** Schedule the task for a future date and time, or choose a frequency for repeating the task.
- 8 Save task.** Save the task with the current configuration and target computers for later use.
- 9 Task Template.** Save settings for this task for later use, or apply settings from a previously saved task.
- 10 Print.** You can print the report or save it as a PDF file.
- 11 Export.** You can export the contents of your report to a comma- or tab-delimited text file, which can then be imported into another program such as a spreadsheet.
- 12 Open selected items.** Open files on remote computers by selecting them and clicking this button.
- 13 Copy to this computer.** Copy the files from remote computers to your computer by selecting them and clicking this button.
- 14 Delete selected items.** Delete files on remote computers by selecting them and clicking this button.
- 15 Results.** Information about the requested system attributes is displayed, with each row containing information about one computer. Click the columns to sort the data.

Remote Administration



New in Apple Remote Desktop 3, you can save task settings as templates in the Task Template menu, making it easy to apply them at a later time. For the Send UNIX task, the Task Template menu comes populated with more than 30 sample scripts—just add your favorites to the list for convenient access.

You can use more than a dozen commands securely on one or more remote Mac OS X client systems, including:

- Sleep, wake, restart, and shut down
- Log out users
- Open files and applications
- Empty Trash
- Lock and unlock screens with a custom or default image
- Rename computers, with the option of adding unique numbers
- Set startup disk
- Send and execute remote shell scripts or UNIX commands

With all Apple Remote Desktop commands, you can schedule tasks for a future date and time, choose a frequency for repeating the tasks, or save them—complete with current configuration and target computers—for later use.

Remote Shell Scripts

Thanks to the UNIX-based foundation of Mac OS X and a rich set of command-line tools, Apple Remote Desktop enables you to execute UNIX shell scripts and commands on multiple remote client systems and get feedback on their success or failure. This powerful capability gives you unlimited flexibility to accomplish system maintenance tasks—even if there is no explicit Apple Remote Desktop command for the task. What's more, Apple Remote Desktop includes two command-line tools—`systemsetup` and `networksetup`—that can set the Network, Energy Saver, and Date & Time system preferences. The Remote Shell Scripts command also benefits from the new Task Template feature in Apple Remote Desktop 3.

Send UNIX Command Task with Send UNIX Command Result

- 1 **Task Template.** Save task settings for later use, or apply settings from a previously saved task. The Task Template menu includes more than 30 sample scripts and UNIX commands.
- 2 **UNIX shell scripts or commands.** Enter one or more UNIX commands or a UNIX shell script to be executed on target computers. You can use the two included tools, `systemsetup` and `networksetup`, to configure the Network, Energy Saver, and Date & Time system preferences.
- 3 **Specify user.** Use the current logged-in user or specify a different user, such as the administrator, to run the task.
- 4 **Toggle display output.** Specify whether all results should be displayed or just the last line of output.
- 5 **Target computer list.** Select the computers and computer lists to execute the UNIX commands. You can drag additional computers and computer lists from the main Apple Remote Desktop window or remove computers from the list.
- 6 **Schedule task.** Schedule the task for a future date and time, or choose a frequency for repeating the task.
- 7 **Save task.** Save the task with the current configuration and target computers for later use.
- 8 **Print.** Print the report or save it as a PDF file.
- 9 **Export.** Export the contents of your report to a comma- or tab-delimited text file, which can then be imported into another program, such as a spreadsheet.
- 10 **Summary view.** View summary results of Send UNIX Command, including whether the commands succeeded or failed and the last line of output.
- 11 **Detailed view.** View detailed results of Send UNIX Command. Selecting a computer in the detailed view will automatically scroll to the location of the output for that computer.

NetBoot and Network Install services

Mac OS X Server includes system imaging tools that streamline the support of Mac clients and reduce system administration costs. Administrators can use NetBoot to host a single operating system and application configuration on all desktop systems. Network Install is an ideal solution for installing and upgrading software on Mac OS X desktop and portable systems.

Remote Boot Disk Selection

Apple Remote Desktop 3 allows you to designate the startup disk of client systems from your own computer. This feature enables you to set any number of Mac computers to start up from a NetBoot or Network Install image or from a specific partition on the local hard drive—especially useful for deploying a standard desktop configuration across multiple systems, whether in classrooms, computer labs, kiosks, or compute clusters. After selecting the boot disk, you set the systems to restart immediately or at a later date and time. There's no need to travel from location to location configuring each system individually.

Set Startup Disk

The screenshot shows the 'Set Startup Disk' dialog box. It has a title bar with standard Mac OS window controls. Below the title bar is a 'Template' dropdown menu set to 'None'. The main area is titled 'Set the disk or network volume to use to start up the target computers.' and contains a table with columns 'Startup Disk', 'Server Address', and 'Kind'. The table lists 'Custom Volume' (Custom Server), 'Hard Disk' (Local), and 'IS&T Diagnostic System' (17.216.100.98, Mac OS X). Below the table is a checkbox 'Restart when done (users will lose unsaved changes)' and an 'Edit...' button. At the bottom is a list of target computers with columns 'Name' and 'Status'. The list includes 'Power Mac 8', 'Power Mac 3', 'Power Mac 2', 'Marketing iMac 3', 'Marketing', and 'Legal'. Below the list is a status bar '4 computers, 2 lists'. At the bottom of the dialog are buttons for 'Schedule...', 'Save', and 'Set'. Numbered callouts point to: 1. The 'IS&T Diagnostic System' row in the table; 2. The 'Restart when done' checkbox; 3. The target computer list; 4. The 'Schedule...' button; 5. The 'Save' button; 6. The 'Template' dropdown menu.

1 Select startup disk. Choose from a list of available network volumes; specify server and image name; or select a local drive or partition to be the startup disk.

2 Restart computers. You can choose to have the computers restart immediately after the startup disk setting has been changed.

3 Target computer list. Select the computers and computer lists for setting their startup disk. You can drag additional computers and computer lists from the main Apple Remote Desktop window or remove computers from the list.

4 Schedule task. Schedule the task for a future date and time or choose a frequency for repeating the task.

5 Save task. Save the task with the current configuration and target computers for later use.

6 Task Template. Save task settings for later use, or apply settings from a previously saved task. The Task Template menu includes over 30 sample scripts and UNIX commands.

Remote Assistance



With powerful screen-sharing and text-messaging capabilities, Apple Remote Desktop 3 makes it easy to provide thorough technical assistance to the computer users in your organization. Observe and control one or many remote Mac OS X systems. Apple Remote Desktop 3 uses the Virtual Network Computing (VNC) standard—which means it's also possible to observe and control VNC-enabled Windows, Linux, and UNIX systems. New remote assistance capabilities, such as drag and drop and copy and paste, make interacting with client computers even easier. And when you're configuring sensitive information on remote systems, Curtain Mode provides an added degree of privacy.

Quartz 2D graphics

Apple Remote Desktop leverages the Quartz 2D library, including the use of optimized CoreGraphics libraries, to boost the performance of its screen-sharing capabilities.

Observe and Control

Apple Remote Desktop 3 allows you to observe and control remote Mac OS X systems from anywhere on the network. Each observe and control window includes a toolbar for adjusting the color depth of the remote screen; a screen capture button allows you to take snapshots of the remote screen. Toggle buttons let you switch between observe and control modes, sharing control and taking complete control of the mouse and keyboard, and fit-in-window and full-screen modes. With the fit-in-window mode, you can scale your view of the remote screen to fit your control window. Resizing the screen in your window also resizes the client screen. By scaling down the screen—and, as a result, transmitting less data—you can achieve better performance over slower network connections.

Apple Remote Desktop 3 also lets you control computers that have multiple displays attached. You can choose to view all the displays in one virtual window or to view only one display at a time.

Remote Drag and Drop

Now it's easy to transfer files and folders between two computers. With the new Remote Drag and Drop feature, you can simply drag and drop a file or folder from your computer to a remotely controlled computer—or from a remote computer to your own.

Remote Copy and Paste

You can move text or images easily by copying and pasting them from your local computer to a remote computer.

Curtain Mode

Apple Remote Desktop 3 allows you to block the remote user's view of the desktop with a virtual "curtain." This gives administrators additional security when configuring sensitive information.

Remote Control



- ① **Remote computer.** Control any Mac OS X screen or any VNC-enabled computer.
- ② **Toggle control mode.** Toggle between control mode and observe mode.
- ③ **Toggle keyboard and mouse control.** Toggle between sharing the keyboard and mouse with a remote user and taking absolute control.
- ④ **Fit-in-window toggle.** Toggle between fit-in-window mode and full-screen mode. In fit-in-window mode, the remote screen is scaled to fit the control window. In full-screen mode, the remote screen is displayed at its normal size; if the control window is smaller, the contents pan and scan as you move the mouse.
- ⑤ **Curtain Mode toggle.** Toggle into and out of Curtain Mode. In Curtain Mode, the remote screen displays a Curtain graphic. This prevents the end user from viewing the screen, while the administrator continues to have full access to the screen. Click the Curtain Mode button again to give the end user access to the screen.
- ⑥ **Screen capture.** Take a screen capture of the remote screen.
- ⑦ **Full-screen toggle.** Toggle into and out of full-screen mode. In full screen, your whole screen displays the remote screen.
- ⑧ **Remote Copy and Paste.** Move the contents of a remote clipboard to the clipboard of your computer. Or take the contents of your local clipboard and move it to the clipboard of one or more remote computers.
- ⑨ **Color depth.** Adjust the color depth of the displayed screen. Choose one of four modes: millions of colors, thousands of colors, grayscale, or black and white.

Multi-Observe with System Status Indicators

With Apple Remote Desktop 3, you can observe up to 50 screens simultaneously, so you quickly understand what's happening on your network. The multi-observe window allows you to specify the number of remote computer screens to display in one window. If you have more computers on your network than you wish to view in the multi-observe window, you can page through their screens based on an adjustable timer setting. As with the control and observe windows, you can specify the color depth at which the remote screens are displayed.

New in Apple Remote Desktop 3 are system status indicators (SSIs) that provide at-a-glance information about the computers in your network. Under each screen, you'll see the name of the computer, the name of the current user, and the user's account picture. Red, yellow, and green indicators show the status of the computer. (Users who are color-blind can choose shapes to indicate status.) Click the indicator light to get details on available disk space, memory utilization, and CPU utilization.

Multi-Observe Window

1 **Remote screens.** View multiple remote screens in a single window. Screens can be those of any Mac OS X or VNC-enabled computers. Your screen updates in real time.

2 **Page forward and backward.** When you are observing more computers than are visible in one window, use the arrows to page forward and backward between groups of screens.

3 **Perform tasks.** Select a screen to perform a task on the corresponding computer. For instance, you can select a screen and initiate a full-control session—or select all screens and copy files to all those computers.

4 **View options.** Adjust the number of screens that are visible in the window, from one computer to up to 50. Adjust the observation time when you have more computers selected than are visible. Adjust the color depth of the viewed screens using one of four modes: millions of colors, thousands of colors, grayscale, or black and white. Specify an optional caption to be displayed under each screen: name, IP address, host name, and computer status.

5 **Scale window.** Scale the window to the size you like. Individual screens automatically scale to fit.

Screen Sharing and Text Messaging

Guest Access

The Guest Access option allows computer users to accept or refuse an administrator's request to control or observe their systems—and can be enabled or disabled based on the policies of your organization.

Apple Remote Desktop 3 enables you to select one or multiple Mac screens and share them with other Mac OS X systems. This feature is useful for demonstrating specific tasks or for training a group of computer users.

Two-way text messaging allows you to broadcast text messages to one or more Mac OS X systems or to initiate private, real-time computer-to-computer text chat. With text messaging enabled, client users can also initiate text communications to request assistance from their administrator or help desk.

Automation



Automator actions in Apple Remote Desktop 3

- Choose Computer List
- Choose Remote Computer
- Close Every Window in Finder
- Convert Computer Lists to Computers
- Copy Items to Computers
- Delete Desktop Items
- Eject All Disks
- Empty Trash
- Enable-Disable Dashboard
- Execute AppleScript
- Execute New UNIX Task
- Force Quit All Applications
- Get Every Computer
- Hide Other Applications
- Launch Dashboard
- Lock Screens
- New Computer List
- Open Folder
- Restart Computers
- Retrieve References to Computers
- Send Text Message
- Set Desktop Picture
- Set Remote Access
- Set Remote Finder Prefs
- Set Sleep and Wake
- Set Time to Current Time
- Set Time Zone
- Set Volume
- Start Screen Saver
- Store References to Computers
- Unlock Screens

Apple Remote Desktop 3 includes more than 30 Automator actions, making it quick and easy to accomplish time-consuming, repetitive manual tasks.

Automator Workflows

With Automator and Apple Remote Desktop 3, it's easy to create custom administration workflows by chaining together individual actions. You can save these workflows as self-running applications, droplets, or plug-ins that can be accessed in an instant through Script Menu—whenever you need them.

For example, you may need to configure a new batch of systems all at once: setting a corporate desktop, turning on remote access, setting Finder preferences such as Energy Saver settings, changing the time zone, and syncing the time to the corporate time server. By creating and saving a plug-in that accomplishes all these tasks in exactly the same way every time, you can streamline the process of configuring any new system.

Once you've created a desktop management workflow, you can easily share it with less technical people in your organization. Teachers can use Automator actions and plug-ins to manage their classroom systems—for example, adjusting the volume on a computer or locking a screen—without needing to know anything about Apple Remote Desktop. This allows you to extend the power of Apple Remote Desktop and ensure consistent system administration standards across your organization.

Product Details



Package Contents

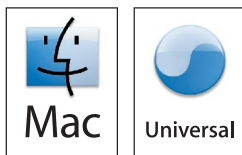
Apple Remote Desktop 3 includes the following:

- Apple Remote Desktop 3 CD
- Getting started guide
- Electronic documentation

Licensing Options

Apple Remote Desktop 3 is licensed per administrator and is available in two versions: a 10 Managed Systems edition and an Unlimited Managed Systems edition. The 10 Managed Systems edition permits one administrator to manage up to 10 computers. The Unlimited Managed Systems edition permits one administrator to manage an unlimited number of computers. A Task Server requires a separate Unlimited Managed Systems license.

Apple Remote Desktop 3 is sold through the online Apple Store at www.apple.com/store, at retail Apple stores, and at Apple Authorized Resellers. The software is available in English, French, German, and Japanese.



Apple Remote Desktop 3 runs natively on both PowerPC- and Intel-based Mac systems.

System Requirements

Apple Remote Desktop 3 requires the following:

- Mac OS X v10.3.9 or later
 - Automator actions and the Remote Desktop widget require Mac OS X v10.4 or later on the administrator system.
 - Remote Spotlight search requires Mac OS X v10.4 or later on the client system.
- Network connection using Ethernet (recommended), IP over FireWire, or AirPort

Technical Specifications



Software Distribution

Package installation

- Install single or multiple packages remotely on a group of Mac OS X systems
- Install packages in .pkg and .mpkg formats
- Schedule for specific dates and times
- Detect whether a package requires a restart
- Restart computer upon completion of installation or at a later time
- Encrypt data stream
- Specify network bandwidth usage

File copy

- Copy single or multiple files and folders to a group of Mac OS X systems
- Copy single or multiple files and folders from a group of Mac OS X systems to administrator computer
- Copy single or multiple files to predefined locations: same relative location, Applications folder, current user's Desktop folder, current user's home directory, Fonts folder, Preferences folder, System folder, top folder of the disk, or a specified path
- Schedule for specific dates and times
- Choose an action if an item already exists: ask what to do, replace the item, replace if existing item is older, rename the existing item, rename the item being copied
- Set the permissions of the file once copied: inherit from destination folder, preserve current owner or user, or specify user and group
- Encrypt data stream
- Specify network bandwidth usage



Asset Management

Spotlight search

- Search a remote computer, its startup disk, or a specific folder, qualified using one or more of these metadata keywords: Kind, Last Opened, Last Modified, Created, Keywords, Color, Label, Name, Contents, and Size—and filtered for specific text. Results can be copied back to the administrator computer, opened on remote computers, or deleted.

Reports

- User History: Who has logged in to a computer, how and where they accessed it, and when they logged in and out
- Application Usage: Which applications have been used on remote systems, the number of launches of an application, duration of the launch, and who executed the launch
- File Search: Search for files on a group of Mac OS X computers using name, parent path, full path, extension, date modified, date created, actual size, size on disk, kind, visibility, version number, version string, owner, group, permissions, and lock status file attributes
- Software Version: Select up to 10 applications and compare versions installed on administrator computer with a group of Mac OS X computers
- Software Difference: Compare applications, fonts, and installed packages on administrator computer with a group of Mac OS X computers
- System Overview:
 - Computer: Active Processors, Available User Memory, Boot ROM, Bus Clock Speed, Bus Data Size, CPU Speed, Serial Number, Vector Processor, L2 Cache Size, L3 Cache Size, Machine Model, Memory, Empty RAM Slots, PCI Slots Used, Processor Count, CPU Type, Sales Order Number, VM Size, Total RAM Slots
 - Software: Kernel Version, System Version
 - Storage: Free Disk Space, Total Disk Space, Trash Size
 - AirPort: AirPort Active, AirPort Firmware Version, AirPort Hardware Address, AirPort Locale, AirPort Type, AirPort Installed, AirPort Network Channel, AirPort Network in Range, Computer to Computer, AirPort Network Name
 - Modem: Modem Country, Modem Driver, Modem Firmware Version, Modem Installed, Modem Interface, Modem Model
 - Network: First Ethernet Address, NetBoot Status, Primary IP Address, Primary Network Collisions, Primary Network Flags, Primary Network Hardware Address, Primary Network Input Errors, Primary Network Input Packets, Primary Network Output Errors, Primary Network Output Packets, Primary Network
 - Display: Monitor Depth, Monitor Resolution, Monitor Type, 2nd Monitor Depth, 2nd Monitor Resolution, 2nd Monitor Type
 - Devices: ATA Device Count, FireWire Device Count, Keyboard Connected, Mouse Connected, Optical Drive Type, SCSI Device Count, USB Device Count
 - AppleTalk: AppleTalk Active, AppleTalk Network, AppleTalk Node, AppleTalk Zone
 - Sharing: Computer Name, File Sharing, FTP Access, Remote Apple Events, Remote Login, UNIX Hostname, Web Sharing, Windows Sharing
 - Preferences: Sleep Display, Sleep Hard Disk, Sleep Computer, Wake for Ethernet Access
 - Printing: Printer Name, Printer Sharing, Printer Type, Printer Version
 - Remote Desktop: Computer Info #1, Computer Info #2, Computer Info #3, Computer Info #4

- Storage:
 - Hardware: Drive Manufacturer, Drive Model, Drive Revision, Drive Protocol, Removable, Serial Number, Logical Unit Number, Detachable
 - Volume: Creation Date, Disk Name, File Count, Folder Count, Total Disk Space, Free Space, Startup Disk, UNIX Mount Point
 - File system: Disk Format, Owner, Group, Permission Modes, Permissions, Write Access, Modification Date, Case Sensitive, Preserves Case
 - Backup: Journaling Capable, Journaled, Last Backup Date, Last Check Date
- FireWire devices: Manufacturer, Model, Device Speed, Software Version, Firmware Version
- Network Interfaces:
 - Network overview: Name, Active, Primary, Configured With, Hardware Address, Interface Name, Flags
 - Active interface: Domain, Router Address, IP Address, Broadcast Address, DNS Server, Subnet Mask, IP Addresses, Broadcast Addresses, DNS Servers, Subnet Masks
 - Network statistics: Network Collisions, Network Input Errors, Network Input Packets, Network Output Errors, Network Output Packets
 - Output statistics: Output Queue Capacity, Output Queue Size, Output Queue Peak Size, Output Queue Drop Count, Output Queue Output Count, Output Queue Retry Count, Output Queue Stall Count
 - Ethernet statistics: Ethernet Alignment Errors, Ethernet FCS Errors, Ethernet Single Collision Frames, Ethernet Multiple Collision Frames, Ethernet SQE Test Errors, Ethernet Deferred Transmissions, Ethernet Late Collisions, Ethernet Excessive Collisions, Ethernet Internal MAC Transmit Errors, Ethernet Carrier Sense Errors, Ethernet Frames Too Long, Ethernet Internal MAC Receive Errors, Ethernet Chip Set, Ethernet Missed Frames, Ethernet Receiver Overruns, Ethernet Receiver Watchdog Timeouts, Ethernet Receiver Frames Too Short, Ethernet Receiver Collision Errors, Ethernet Receiver PHY Errors, Ethernet Receiver Timeouts, Ethernet Receiver Interrupts, Ethernet Receiver Resets, Ethernet Receiver Resource Errors, Ethernet Transmitter Underruns, Ethernet Transmitter Jabber Events, Ethernet Transmitter PHY Errors, Ethernet Transmitter Timeouts, Ethernet Transmitter Interrupts, Ethernet Transmitter Resets, Ethernet Transmitter Resource Errors, Ethernet Collision Frequencies
- PCI cards: Card Name, Card Type, Card Memory, Card Revision, Vendor ID, Device ID, ROM Revision, Slot Name
- Memory: Slot Identifier, Module Size, Module Type, Module Speed
- USB devices: Product Name, Vendor Name, Device Speed, Product ID, Vendor ID, Bus Power Amps

Reporting capabilities

- Schedule reports for a specific date and time
- Set Mac OS X computers to rebuild and send data on their hardware and software settings on a regular schedule or only as needed
- Store data for hardware reports in the included SQL database for fast and easy retrieval



Remote Administration

Manage systems remotely

- Sleep and wake one or more Mac OS X systems
- Restart and shut down one or more Mac OS X systems; perform restart and shutdown immediately or allow users to save work
- Open files and applications on one or more Mac OS X systems
- Empty Trash for all users on one or more Mac OS X systems
- Log out current user for one or more Mac OS X systems
- Upgrade Apple Remote Desktop Client software on a group of Mac OS X computers running earlier versions of Apple Remote Desktop Client software (v1.2 or later)

Send UNIX commands to a group of Mac OS X systems

- Execute commands as the current user or a specified user
- Set Network, Energy Saver, and Date & Time system preferences using command-line tools
- Use any of more than 30 sample UNIX scripts in Task Template menu; add your own scripts

Set startup disk

- Set startup disk to local disk or partition, or select from a list of NetBoot or Network Install images
- Start up multiple computers remotely
- Optionally restart computers after setting new startup disk

Rename Mac OS X computers

- Append a unique number for each computer when multiple computers are selected

Change Apple Remote Desktop Client settings

- Change the Apple Remote Desktop Client settings for one or more Mac OS X systems
- Save as a package to apply to Mac OS X systems at a later date



Remote Assistance

Observe and control screens of remote Mac computers

- Support for VNC-enabled computers, including Windows and Linux systems
- Drag and drop a file from one remote computer to another
- Use Remote Copy and Paste to quickly transfer text or images
- Adjust color depth to one of four modes: black and white, grayscale, thousands of colors, millions of colors
- Scale screens to fit in current window when viewing larger screens
- Use Curtain Mode to block a user's view while configuring sensitive information
- Take complete control or share mouse and keyboard with remote user
- Toggle between full-screen mode and fit-in-window mode
- Take screen shots

Observe and control multiple screens of remote Mac or VNC-enabled computers simultaneously

- View up to 50 screens in a single window
- Adjust the number of screens visible on each page
- Adjust color depth to one of four modes: black and white, grayscale, thousands of colors, millions of colors
- Rotate through the list of observed computers manually or automatically
- View at-a-glance information about network computers using system status indicators

Screen sharing and text communication

- Share a Mac screen with other Mac OS X systems
- Send text message to a group of Mac OS X systems
- Conduct one-to-one real-time, computer-to-computer text chat



Easy Setup

- Discover the computers you need to manage using network scanners; create as many scanners as you need and configure each to search particular areas of your network
- Create computer lists to organize the system however you wish; by model, location, or department, for example
- Review or reuse tasks using list of previously executed tasks
- Allow non-administrator users to run Apple Remote Desktop 3 with some or all features enabled
- Use a computer other than the administrator computer as a Task Server to automatically collect reporting data
- Use groups to organize computers by location, model, or department
- Define a set of rules to add computers to Smart Computer Lists automatically
- Associate computers with one of seven user-defined labels
- Use customized Computer List views to show only information of interest, including 14 additional attributes that may be chosen for display
- Authenticate clients using organization's directory services group names
- Encrypt all communications between Apple Remote Desktop 3 and client computers with 128-bit AES encryption, or disable encryption for data-intensive tasks



Automation

- Create powerful system administration workflows by combining Apple Remote Desktop actions
- Create end-to-end solutions by combining actions with other applications' actions
- Save Automator workflows as plug-ins
- Includes over 30 actions

For More Information

For more information about Apple Remote Desktop 3, visit www.apple.com/remotedesktop.

For more information on Automator, visit www.apple.com/macosx/features/automator.

For technical articles about product issues, usage, and implementation, visit www.apple.com/support/remotedesktop.

¹Each Task Server requires its own copy of Apple Remote Desktop 3. ²Apple Remote Desktop Client software version 1.2 or later is installed automatically when you install Mac OS X v10.3 or later on a client computer.

© 2006 Apple Computer, Inc. All rights reserved. Apple, the Apple logo, AirPort, AppleScript, AppleTalk, FireWire, iTunes, Mac, the Mac logo, Macintosh, Mac OS, Panther, Power Mac, Quartz, and Xserve are trademarks of Apple Computer, Inc., registered in the U.S. and other countries. Apple Remote Desktop, Bonjour, Finder, Spotlight, and Tiger are trademarks of Apple Computer, Inc. AppleCare and Apple Store are service marks of Apple Computer, Inc., registered in the U.S. and other countries. Intel is a trademark of Intel Corp. in the U.S. and other countries. PowerPC is a trademark of International Business Machines Corporation, used under license therefrom. Other product and company names mentioned herein may be trademarks of their respective companies. Product specifications are subject to change without notice. This material is provided for information purposes only; Apple assumes no liability related to its use. April 2006 L314877A